

CONNECT PRISMATIC

Acoustic Baffles



Brand: **Zintra**

Collections: **Connect Baffles**

Applications: **Ceilings**

+1 855 922 7377

hello@zintraacoustic.com

zintraacoustic.com

1 of 8

zintra[®]

CONNECT PRISMATIC

Acoustic Baffles



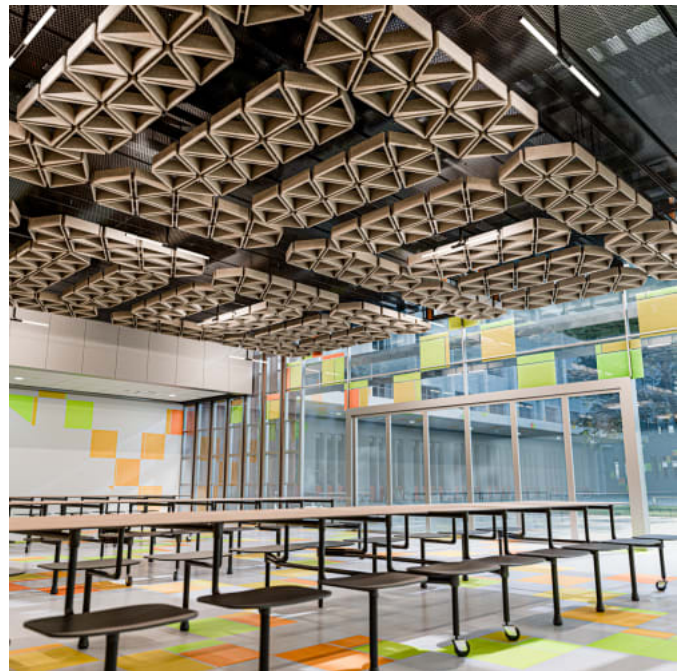
Baffle Prismatic - Mandarin



Baffle Prismatic - Mandarin



Baffle Prismatic - Greige



Baffle Prismatic - Greige

+1 855 922 7377

hello@zintraacoustic.com

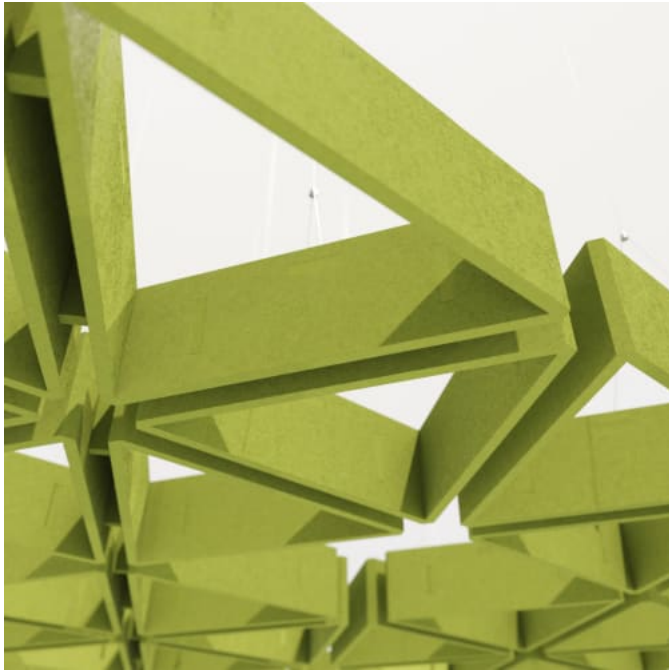
zintraacoustic.com

2 of 8

zintra[®]

CONNECT PRISMATIC

Acoustic Baffles



Baffles Connect Prismatic Grass



Baffles Connect Prismatic Detail

CONNECT PRISMATIC

Acoustic Baffles

Add sculptural on-trend geo-accent to your ceiling space with Connect Prismatic Baffles. Designed for full ceiling coverage.

- ✓ Acoustic
- ✓ Bleach Cleanable
- ✓ Easy Clean
- ✓ Easy Install

Description	<p>Add sculptural on-trend geo-accent to your ceiling space with Connect Baffles. An innovative solution to large areas requiring improved acoustics, Connect Baffle options are designed with full ceiling coverage in mind and will create a ceiling space with architectural shape, form and definitive character. Connect Prismatic features a collection of interconnected triangles, presenting a visually captivating and harmonious design. This pattern introduces a sense of structure and balance to interior spaces.</p> <p>Connect Baffles are also available in 4 other great designs:</p> <p>Cirrus is characterized by a linear, interconnected design, arranged in a flowing, cohesive formation. This pattern adds a sense of movement and unity to interior spaces.</p> <p>Cubix features a grid of interconnected squares, creating a visually dynamic and orderly design. This pattern brings a sense of structure and balance to interior spaces.</p> <p>Hive showcases a network of interconnected hexagons, offering a visually striking and cohesive design. This pattern introduces a sense of symmetry and harmony to interior spaces.</p> <p>Rise showcases a combination of interconnected geometric shapes, including small rectangles and larger, randomized forms. This captivating design adds visual interest and complexity to interior spaces.</p>
-------------	---

Composition	Zintra Acoustic Panel - 100% Solution Dyed (Colour Through) Polyester
	12mm (1/2") -Density 2.4 kg /m² 0.5 lb/ft²

Sustainability	<p>Zintra is made from 100% recyclable materials.</p> <ul style="list-style-type: none">• 60% post-consumer recycled content from PET bottles.• 35% pre-consumer recycled content from PET chips• 5% polylactic acid (PLA)
----------------	--

Dimensions	<p>Prismatic</p> <ul style="list-style-type: none">• 18 triangles / set, 1.7m² (16.9 SF)• 768mm (30.2") w x 2241mm (88.2") d x 120mm (4.7") h
------------	--

CONNECT PRISMATIC

Acoustic Baffles

Fire Rating	ASTM-E84 – Class A classification AS ISO 9705 – 2003 – Group 1 classification EN-13501 – B-s2-d0 classification
Supplied As	Connect Prismatic <ul style="list-style-type: none">• 18 Connect Connectors• 1 x each Hanger Bolt, Adjustable Fastener, Cable with swage end and barrel.
Fabrication Techniques	Stanley knife and straight edge
Assembly & Delivery	Connect Baffles are supplied flat pack. Assembled your Connect Baffle then suspended from the ceiling using hanging hardware supplied. Recommended 2 People assembly Go to the Technical Documents and download the Installation Guide for more details.
Suggested Installation	Go to Technical Documents and download the Installation Guide for more details.
Care Instructions	Vacuum to remove dust. Dab Zintra with a damp clean cloth and mild solution of liquid detergent and warm water. Repeat using only clean water, then pat dry with a lint free cloth. For difficult stains, use a solution of household bleach (10% bleach / 90% water). To remove the bleach, repeat using a clean, water dampened cloth, then pat dry. Always test in an inconspicuous area first and if you don't see the expected results, contact us.
Warranty	Visit FAQ for more details.
Customisable	The Zintra Acoustic Solutions range is customisable to your project. Please get in touch with your local contact for details.

CONNECT PRISMATIC

Acoustic Baffles

Additional Comments	NRC Rating
	• Without Air Gap: Up to 0.90
	• With 24" (610mm) Air Gap: Up to 0.95

How to Specify	1. Select Design
	2. Select Size
	3. Select Zintra Colour

CONNECT PRISMATIC

Acoustic Baffles

Color & Finish Options



BARK/COCOA



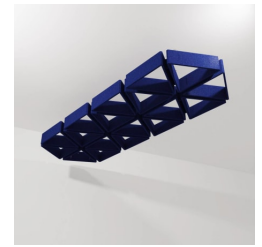
BRICK



CADET



CHAMBRAY/
PERIWINKLE



COBALT/NAVY



ECRU/TAUPE



EUCALYPTUS



FOSSIL



FROST/WHITE



GRASS/LIME



GREIGE



IRON BARK



IVORY/MILKY



LINEN/CREAM



MALACHITE



MANDARIN/ORANGE



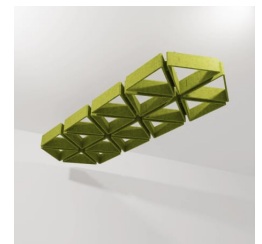
MERBAU



MIDNIGHT



OCHRE/BLUSH



OLIVE



PEBBLE



PEWTER/GREY



SKY/BLEU



SLATE/ASH



SMOKE/SILVER

+1 855 922 7377

hello@zintraacoustic.com

zintraacoustic.com

CONNECT PRISMATIC

Acoustic Baffles



SPOTTED GUM



SUNSHINE/YELLOW



TAR/BLACK