

# 12MM PANEL

Acoustic Panels



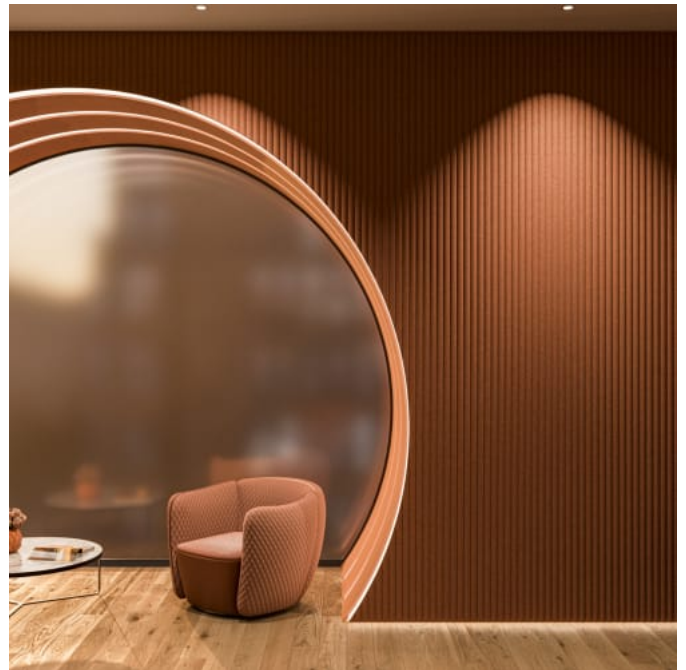
Brand: **Zintra**

Applications: **Ceilings, Walls**



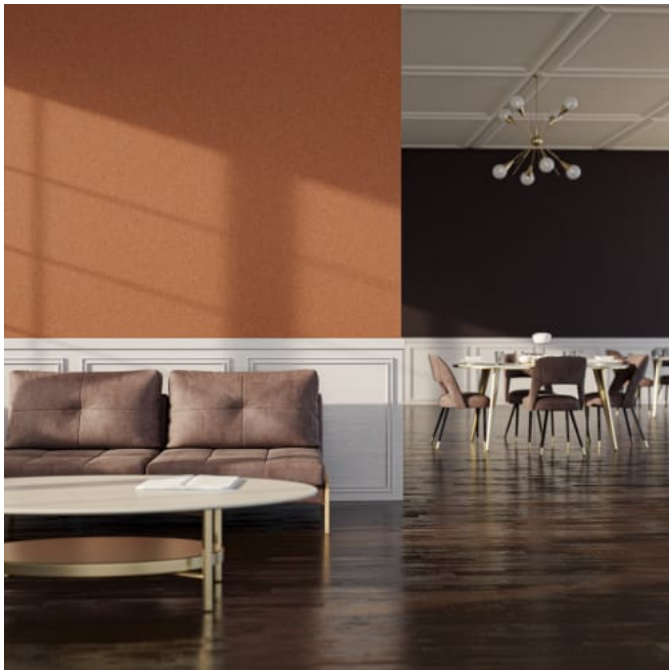
# 12MM PANEL

Acoustic Panels



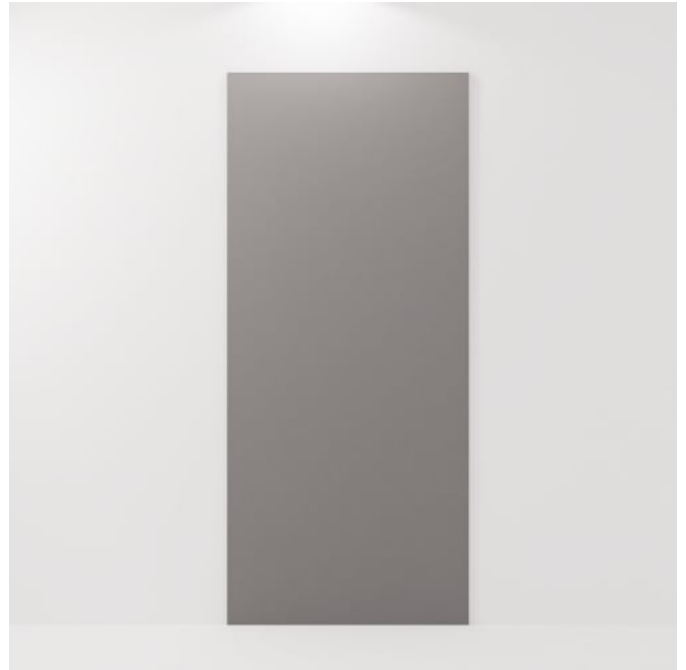
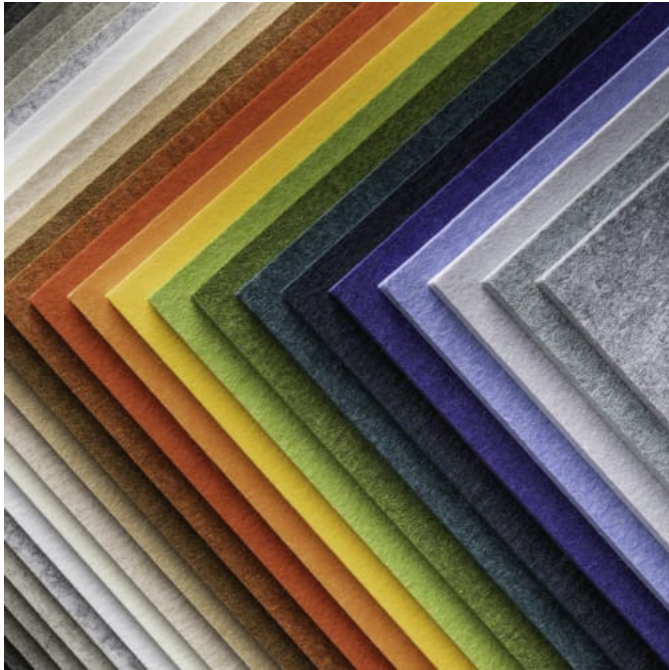
# 12MM PANEL

Acoustic Panels



# 12MM PANEL

Acoustic Panels



12mm Panel Detail

# 12MM PANEL

Acoustic Panels

Zintra Acoustic Panel is the perfect solution for your application where acoustic performance and aesthetics are required. Available in 30 solid Zintra colours + 4 Timber Print

- ✓ Acoustic
- ✓ Bleach Cleanable
- ✓ Easy Clean
- ✓ Easy Install

Description	<p>Experience the perfect synergy of acoustic excellence and visual elegance with Zintra Acoustic Panels, ideal for diverse applications in commercial, hospitality, and institutional projects.</p> <p>Crafted from 100% recyclable materials, Zintra 12mm (1”) panels boast exceptional sound absorption capabilities for walls, ceilings, and screens. Choose from a palette of 30 solid Colours and 4 Timber prints, ensuring effortless integration into any space.</p> <p>With sustainability at its core, Zintra panels are crafted from 60% post-consumer recycled Zintra plastic bottles, 35% pre-consumer recycled Zintra chips, and 5% PLA polylactic acid, offering a budget-friendly sound solution.</p> <p>Measuring at 2800mm (110”)long, these join-free panels are perfect for floor-to-ceiling applications, enhancing both functionality and design. Easy to fabricate and install, Zintra Acoustic Panels ensure a seamless process, complemented by a pinnable surface for personalized customization.</p> <p>Elevate productivity in work environments, enrich guest experiences in hospitality settings, and enhance comfort in institutional spaces with Zintra Acoustic Panels.</p> <p>12mm (1/2")</p>
-------------	---

Composition	<p>Zintra Acoustic Panel - 100% Solution Dyed (Colour Through) Polyester</p> <p>12mm (1/2") -Density 2.4 kg /m² 0.5 lb/ft²</p>
-------------	--

Sustainability	<p>Zintra is made from 100% recyclable materials.</p> <ul style="list-style-type: none"><li>• 60% post-consumer recycled content from PET bottles.</li><li>• 35% pre-consumer recycled content from PET chips</li><li>• 5% polylactic acid (PLA)</li></ul>
----------------	--

Dimensions	<p>Available in 12mm ( 1/2")</p> <ul style="list-style-type: none"><li>• 1225mm (48") w x 2800mm (110") h x 12mm (1/2") d</li><li>• Thickness tolerance =/- 0.5mm (0.02")</li><li>• Width and length tolerance = +/- 3mm (1/8")</li></ul>
------------	---

# 12MM PANEL

Acoustic Panels

Fire Rating	ASTM-E84 – Class A classification AS ISO 9705 – 2003 – Group 1 classification EN-13501 – B-s2-d0 classification
Acoustic Rating	NRC 0.45-0.95
Supplied As	Flat packed
Fabrication Techniques	Utility knife and CNC with oscillating knife.
Assembly & Delivery	<p>Ships Flat Pack</p> <p>Install using one of these four common techniques.</p> <ol style="list-style-type: none"><li>1. Direct to the substrate</li><li>2. Z-Clips</li><li>3. Stand Offs</li><li>4. Mechanical Fastener</li></ol> <p>Go to the Technical Documents and download the Installation Guide for more details.</p>
Suggested Installation	Go to Technical Documents and download the Installation Guide for more details.
Care Instructions	<p>Vacuum to remove dust.</p> <p>Dab Zintra with a damp clean cloth and mild solution of liquid detergent and warm water. Repeat using only clean water, then pat dry with a lint free cloth.</p> <p>For difficult stains, use a solution of household bleach (10% bleach / 90% water). To remove the bleach, repeat using a clean, water dampened cloth, then pat dry.</p> <p>Always test in an inconspicuous area first and if you don't see the expected results, contact us.</p>
Customisable	The Zintra Acoustic Solutions range is customisable to your project. Please get in touch with your local contact for details.
Additional Comments	NRC 0.45-0.95

# 12MM PANEL

Acoustic Panels

---

How to Specify

Select Zintra Color

---

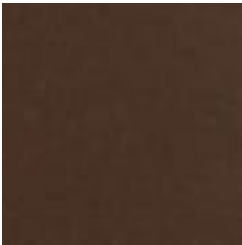


# 12MM PANEL

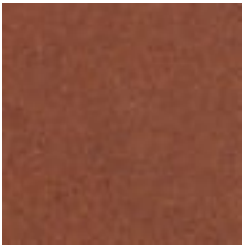
Acoustic Panels

## Color & Finish Options

Zintra 12mm Solid PET



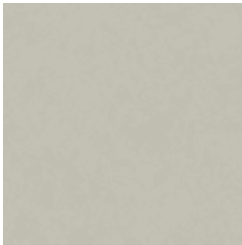
Bark



Brick



Cadet



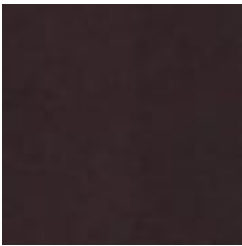
Chambray



Cobalt



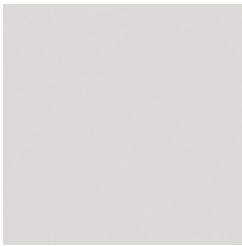
Ecru



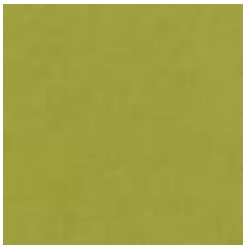
Elderberry



Fossil



Frost



Grass



Greige



Ivory



Linen



Malachite



Mandarin



Meadow



Midnight



Ochre



Olive



Parchment



Pebble



Pewter



Saffron



Sky



Smoke



# 12MM PANEL

Acoustic Panels



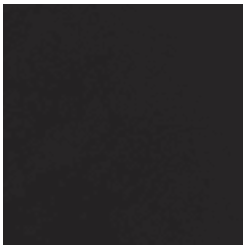
Slate



Storm



Sunshine



Tar



Twilight

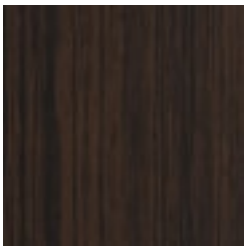
## Zintra Timber Print



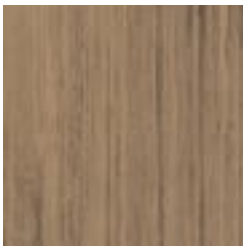
Eucalyptus



Ironbark



Merbau



Spotted Gum