

# ETCH PANEL SPECTRUM

Acoustic Panels



Brand: **Zintra**

Collections: **Etch Panel**

Applications: **Walls, Ceilings**

+1 855 922 7377

hello@zintraacoustic.com

[zintraacoustic.com](http://zintraacoustic.com)

1 of 8

**zintra**<sup>®</sup>

# ETCH PANEL SPECTRUM

Acoustic Panels

---



Etch Panel Spectrum Detail

# ETCH PANEL SPECTRUM

Acoustic Panels

Explore the possibilities of spatial perception and artistic expression with Zintra Etch 3D panels, Spectrum design.

✓ **Acoustic**

✓ **Bleach Cleanable**

✓ **Easy Clean**

✓ **Easy Install**

## Description

Zintra Etch, where acoustic absorption meets dynamic 3D design. With a range of subtle textures, Zintra Etch brings cutting-edge aesthetics and acoustic functionality to your commercial, hospitality, or institutional interior.

Discover the extensive selection of understated to statement Colours in Zintra Etch, allowing you to create a welcoming atmosphere while effectively managing sound. This cost-effective sound and design solution cultivates calming environments, promoting productivity and well-being.

Zintra Etch seamlessly integrates with plain Zintra panels, offering versatility in design coordination. You can also explore the option of replicating your unique Etch pattern in Zintra on Zintra, for a truly customised solution.

Experience the benefits of Zintra Etch, including pattern matching with seamless hidden joints (excluding VJ Angle and Kaleido). The panel size enables join-free installations from floor to ceiling, making the fitting process effortless.

**Spectrum:** Sizes and shapes converge in a mesmerizing display of visual dynamism. Like a pattern spectrum histogram, Spectrum sparks curiosity and intrigue, adding an innovative touch to any interior.

### **Zintra Etch is available in 15 great designs**

Craze | Cubix | Deviate | Kaleido | Lamella | Reed Bed | Sine | Spectrum | Tessellate | Tetris | Vino | VJ Board Angle | VJ Board Narrow | VJ Board Wide | Volta:

### **Etch is a 3mm deep V groove.**

Not suitable as a free standing product.

## How to Specify

1. Select Etch design
2. Select Zintra Colour

## Composition

Zintra Acoustic Panel - 100% Solution Dyed (Colour Through) Polyester

12mm (1/2") - Density 2.4 kg /m<sup>2</sup> 0.5 lb/ft<sup>2</sup>

# ETCH PANEL SPECTRUM

Acoustic Panels

---

## Sustainability

Zintra is made from 100% recyclable materials.

- 60% post-consumer recycled content from PET bottles.
  - 35% pre-consumer recycled content from PET chips
  - 5% polylactic acid (PLA)
- 

## Dimensions

1219mm (48") x 2743mm (108") x 12mm (½")

---

## Fire Rating

ASTM-E84 – Class A classification  
AS ISO 9705 – 2003 – Group 1 classification  
EN-13501 – B-s2-d0 classification

---

## Supplied As

Zintra Etch panel in selected pattern

---

## Fabrication Techniques

Utility knife and CNC with oscillating knife.

---

## Assembly & Delivery

Ships Flat Pack

Install using one of these four common techniques.

1. Direct to the substrate
2. Z-Clips
3. Stand Offs
4. Mechanical Fastener

Go to the Technical Documents and download the Installation Guide for more details.

---

## Suggested Installation

Go to Technical Documents and download the Installation Guide for more details.

---

# ETCH PANEL SPECTRUM

Acoustic Panels

---

## Care Instructions

Vacuum to remove dust.

Dab Zintra with a damp clean cloth and mild solution of liquid detergent and warm water. Repeat using only clean water, then pat dry with a lint free cloth.

For difficult stains, use a solution of household bleach (10% bleach / 90% water). To remove the bleach, repeat using a clean, water dampened cloth, then pat dry.

Always test in an inconspicuous area first and if you don't see the expected results, contact us.

---

## Warranty

Visit FAQ for more details.

---

## Customisable

The Zintra Acoustic Solutions range is customisable to your project. Please get in touch with your local contact for details.

---

## Additional Comments

NRC 0.45 -0.95

---

# ETCH PANEL SPECTRUM

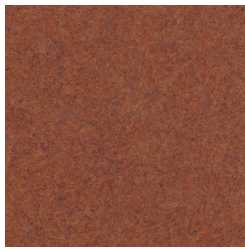
Acoustic Panels

## Color & Finish Options

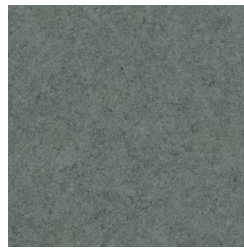
Zintra 12mm Solid PET



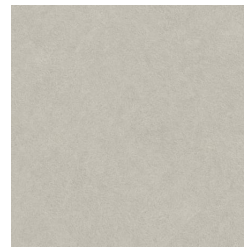
Bark



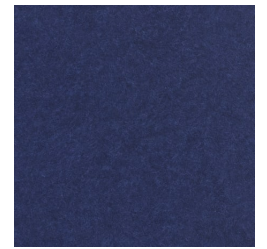
Brick



Cadet



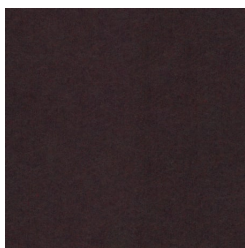
Chambray



Cobalt



Ecru



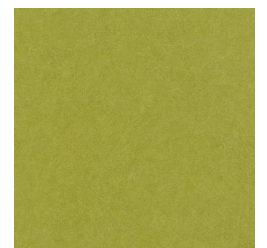
Elderberry



Fossil



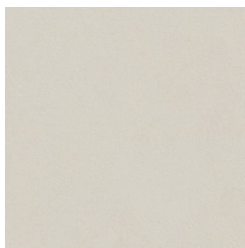
Frost



Grass



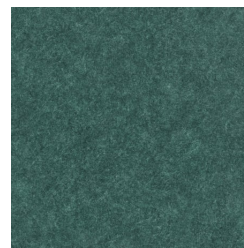
Greige



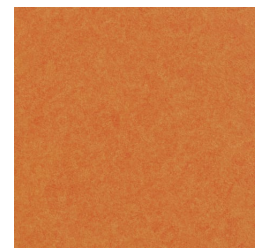
Ivory



Linen



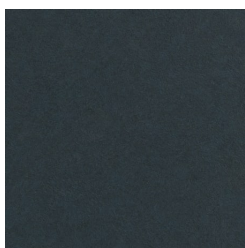
Malachite



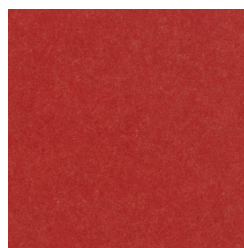
Mandarin



Meadow



Midnight



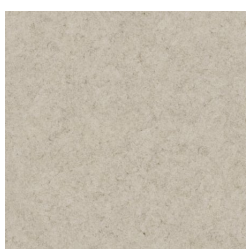
Ochre



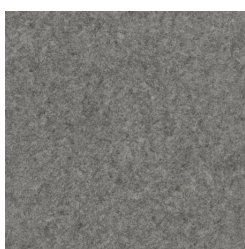
Olive



Parchment



Pebble



Pewter



Saffron



Sky



Smoke

+1 855 922 7377

hello@zintraacoustic.com

zintraacoustic.com

6 of 8

zintra®

# ETCH PANEL SPECTRUM

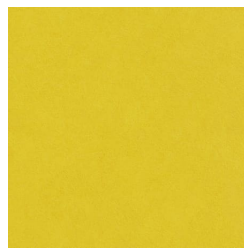
Acoustic Panels



Slate



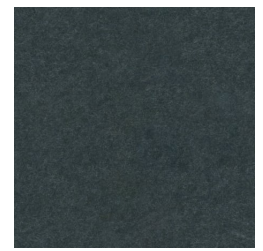
Storm



Sunshine



Tar

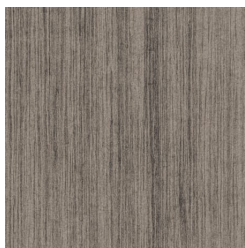


Twilight

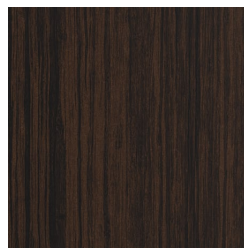
## Zintra Timber Print



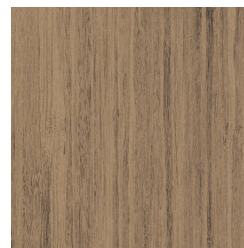
Eucalyptus



Ironbark

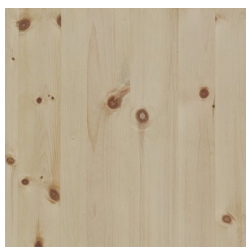


Merbau



Spotted Gum

## Zintra Premium Wood



Knotty Pine



Maple



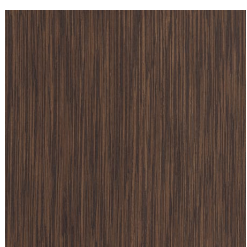
Poplar



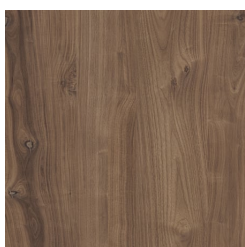
Australian Walnut



Claro Walnut



Palm Wood



Rustic Walnut



Cherry



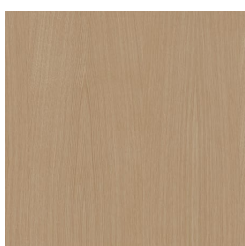
Euro Beech



Lacewood



Redwood



White Oak

## Zintra Premium Material

+1 855 922 7377

hello@zintraacoustic.com

zintraacoustic.com

7 of 8

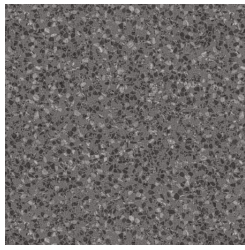
zintra®

# ETCH PANEL SPECTRUM

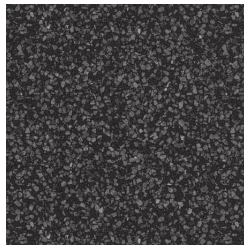
Acoustic Panels



Terrazzo Light



Terrazzo Medium



Terrazzo Dark



Travertine Light



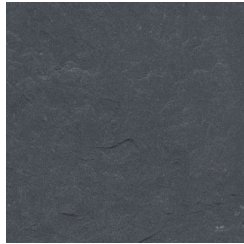
Travertine Medium



Travertine Dark



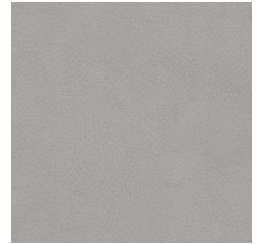
Shale Light



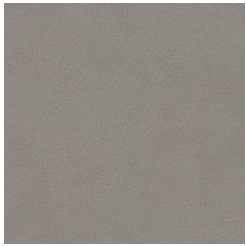
Shale Medium



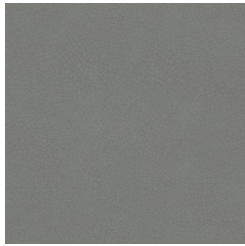
Shale Dark



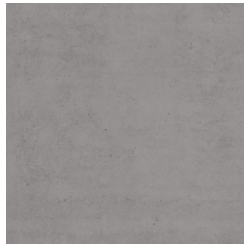
Raku Bone



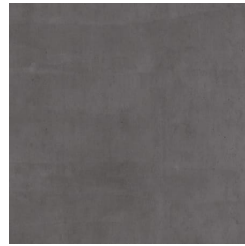
Raku Luster



Raku Jade



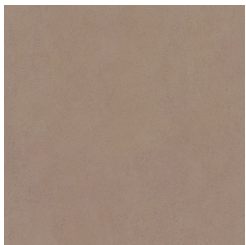
Concrete Cast



Concrete Polished



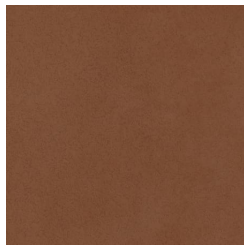
Concrete Dark Tint



Terracotta Sun  
Bleached



Terracotta Mission



Terracotta Antique