

TEXTURE PANEL SIGNE

Acoustic Panels



Brand: **Zintra**

TEXTURE PANEL SIGNE

Acoustic Panels



Texture Signe Detail



Texture Signe Panel

TEXTURE PANEL SIGNE

Acoustic Panels

Innovative 3-dimensional Zintra Texture Panel designs, from sleek lines to captivating patterns. Signe adds depth and style while enhancing acoustics. Ideal for modern or classic settings in bustling public spaces.

✓ **Acoustic**

✓ **Bleach Cleanable**

✓ **Easy Install**

✓ **Easy Clean**

Description

Zintra Textures offers subtle and engaging 3-dimensional panel designs. Each design incorporates aspects that reduce echoes by changing the angle of sound reflecting off the surface. It makes them ideal for noisy public spaces that need a little flair.

Zintra Acoustic Textures not only highlight the fantastic acoustic qualities of Zintra Acoustic Panel, but also the incredible fabrication capabilities Zintra has to offer. Zintra's wide range of designs and colours slip easily into classic or modern settings.

Signe: Bold and expressive abstract forms create a visually engaging and thought provoking statement. Unleash your artistic flair.

The subtle 3-dimensional relief of these designs not only adds dimension to your surrounding but also provides excellent acoustics. Zintra Textures, slip seamlessly into classic or modern settings, adding a touch of innovation and sophistication to noisy public spaces.

Available in 15 designs

Carre | Cercles | Corbe | Diamont | Droit | Echelle | Etoile | Hexagone | Nenuphar | Paume | Signe | Tessan | Tissage | Trappe | Vague

Enhance your space with the innovative style of Zintra Textures.

Not suitable as a free standing product.

Dimensions

1219mm (48") x 2743mm (108") x 24mm (1")

Composition

Zintra Acoustic Panel - 100% Solution Dyed (Colour Through) Polyester

- 12mm (1/2") - Density 2.4 kg /m² 0.5 lb/ft²
- 24mm (1") - Density 3.6 kg /m² 0.75 lb/ft²

Sustainability

Zintra is made from 100% recyclable materials.

- 60% post-consumer recycled content from PET bottles.
- 35% pre-consumer recycled content from PET chips
- 5% polylactic acid (PLA)

TEXTURE PANEL SIGNE

Acoustic Panels

Fire Rating ASTM-E84 – Class A classification
AS ISO 9705 – 2003 – Group 1 classification
EN-13501 – B-s2-d0 classification

Warranty Visit FAQ for more details.

Assembly & Delivery Ships Flat Pack

Go to the Technical Documents and download the Installation Guide for more details.

Supplied As Zintra Textures panel in selected pattern.

Suggested Installation Go to Technical Documents and download the Installation Guide for more details.

How to Specify 1. Select Texture design
2. Select Zintra Colour

Care Instructions Vacuum to remove dust.

Dab Zintra with a damp clean cloth and mild solution of liquid detergent and warm water. Repeat using only clean water, then pat dry with a lint free cloth.

For difficult stains, use a solution of household bleach (10% bleach / 90% water). To remove the bleach, repeat using a clean, water dampened cloth, then pat dry.

Always test in an inconspicuous area first and if you don't see the expected results, contact us.

Customisable The Zintra Acoustic Solutions range is customisable to your project. Please get in touch with your local contact for details.

Additional Comments NRC 0.45-0.90

TEXTURE PANEL SIGNE

Acoustic Panels

Color & Finish Options

Zintra 12mm Solid PET



Bark



Brick



Cadet



Chambray



Cobalt



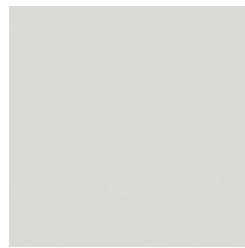
Ecru



Elderberry



Fossil



Frost



Grass



Greige



Ivory



Linen



Malachite



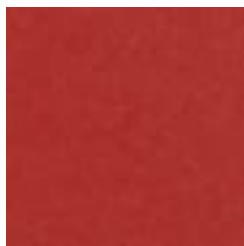
Mandarin



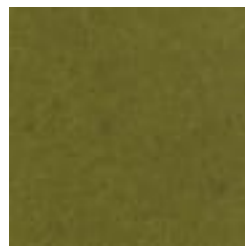
Meadow



Midnight



Ochre



Olive



Parchment



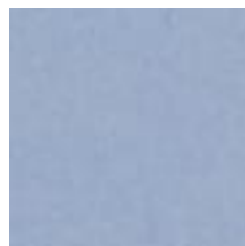
Pebble



Pewter



Saffron



Sky



Smoke

+1 855 922 7377

hello@zintraacoustic.com

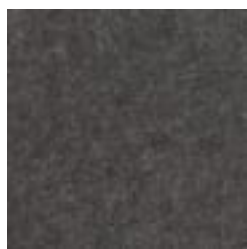
zintraacoustic.com

5 of 6

zintra®

TEXTURE PANEL SIGNE

Acoustic Panels



Slate



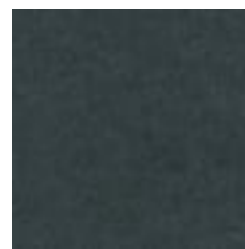
Storm



Sunshine



Tar



Twilight