

# ETCH TILES LOUVER

Tiles



Brand: **Zintra**

Collections: **Etch Tiles**

Applications: **Walls, Tiles**

+1 855 922 7377

hello@zintraacoustic.com

zintraacoustic.com

1 of 7

**zintra**<sup>®</sup>

# ETCH TILES LOUVER

Tiles



Etch Tiles Louver Detail

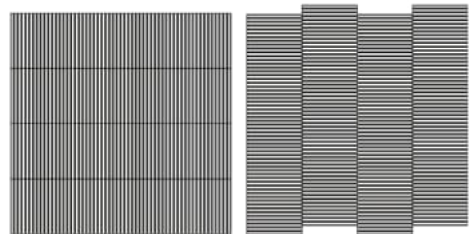


Etch Tiles Louver Detail 2

## 4 Tile Assembly



Etch Tiles Louver Detail



Assembly Suggestions Etch Tiles Louver

# ETCH TILES LOUVER

Tiles

Every line tells a story with Zintra Etch Tiles, Louver. Sculptural, dynamic, and diverse in design, they inspire endless possibilities for dynamic arrangements and playful pattern exploration.

✓ **Bleach Cleanable**

✓ **Acoustic**

✓ **Easy Install**

✓ **Easy Clean**

## Description

Zintra Etch Tiles, where acoustic absorption meets dynamic 3D design. Crafted using a 3mm v-groove, the angled blade creates contemporary, design-led patterns that add a touch of sophistication to any space. Whether you're aiming for a progressive, modern interior or a welcoming atmosphere, Zintra Etch offers a range of subtle textures to suit your design needs.

Available in an extensive range of understated to statement Colours, Zintra Etch Tiles offer a cost-effective solution to enhance both sound quality and visual appeal in commercial, hospitality, and institutional interiors. Create calming environments with these versatile tiles, which can be seamlessly integrated with plain Zintra panels for a cohesive look.

Install either wall to wall or as feature artwork to create an option suitable for any commercial, education or hospitality environment.

### Louver

Each intricate detail is expertly arranged to create a mesmerizing interplay of light and shadow. Designed to be installed either aligned or offset, this redefined and simplistic design becomes a canvas for the symphony of movement that unfolds in your space.

### Available in 15 designs

Battleaxe\* | Chevron\* | Crossbar | Diamond\* | Fluted | Herringbone\* | Hexagon\* | Hourglass\* | Link | Louver | Plank\* | Shadow Box | Square\* | Trapezium\* | Triangle\*

\* Notes designs available in both Plain and Etch.

Sold in sets.

Transform your space with style and acoustic efficiency.

Not suitable as a free-standing product.

## How to Specify

1. Select Design
2. Select Zintra Colour

## Composition

Zintra Acoustic Panel - 100% Solution Dyed (Colour Through) Polyester

- 12mm (1/2") - Density 2.4 kg /m<sup>2</sup> 0.5 lb/ft<sup>2</sup>
- 24mm (1" ) - Density 3.6 kg /m<sup>2</sup> 0.75 lb/ft<sup>2</sup>

# ETCH TILES LOUVER

Tiles

---

## Sustainability

Zintra is made from 100% recyclable materials.

- 60% post-consumer recycled content from PET bottles.
  - 35% pre-consumer recycled content from PET chips
  - 5% polylactic acid (PLA)
- 

## Dimensions

### Louver:

- 9 tiles / set, 3.24 m<sup>2</sup> (35.37 SF)
  - 302mm (11.9") w x 1207mm (47.5") h
- 

## Fire Rating

ASTM-E84 – Class A classification  
AS ISO 9705 – 2003 – Group 1 classification  
EN-13501 – B-s2-d0 classification

---

## Supplied As

- Louver 9 tiles / set, 3.24 m<sup>2</sup> (35.37 SF)
- 

## Assembly & Delivery

Ships Flat Packed.

- Supplied as a set of individual tiles.
- Arrange as required.

Go to the Technical Documents and download the Installation Guide for more details.

---

## Suggested Installation

Go to Technical Documents and download the Installation Guide for more details.

---

## Care Instructions

Vacuum to remove dust.

Dab Zintra with a damp clean cloth and mild solution of liquid detergent and warm water. Repeat using only clean water, then pat dry with a lint free cloth.

For difficult stains, use a solution of household bleach (10% bleach / 90% water). To remove the bleach, repeat using a clean, water dampened cloth, then pat dry.

Always test in an inconspicuous area first and if you don't see the expected results, contact us.

---

## Warranty

Visit FAQ for more details.

---

# ETCH TILES LOUVER

Tiles

---

## Customisable

The Zintra Acoustic Solutions range is customisable to your project. Please get in touch with your local contact for details.

---

## Additional Comments

- NRC 0.45-0.75 Directly Mounted
  - Alpha-w Rating Directly Mounted 0.30-0.60
-



# ETCH TILES LOUVER

Tiles

## Color & Finish Options

Zintra 12mm Solid PET



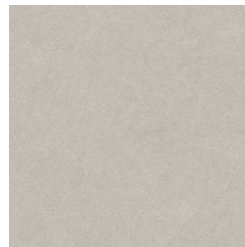
Bark



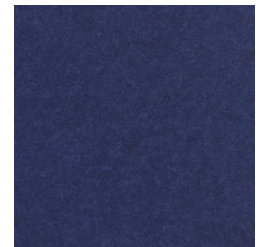
Brick



Cadet



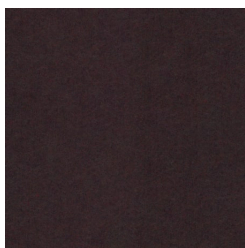
Chambray



Cobalt



Ecru



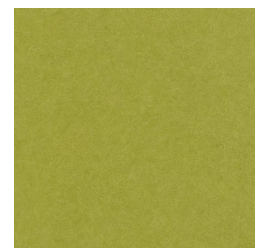
Elderberry



Fossil



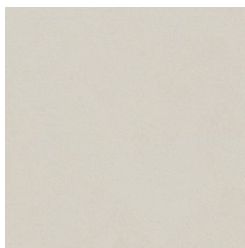
Frost



Grass



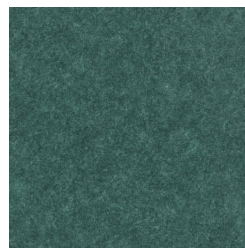
Greige



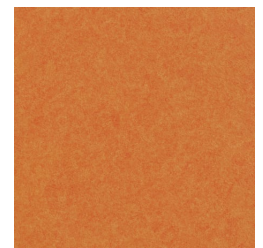
Ivory



Linen



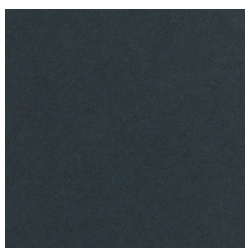
Malachite



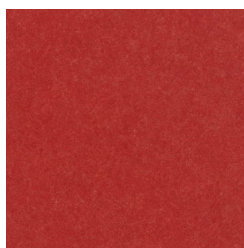
Mandarin



Meadow



Midnight



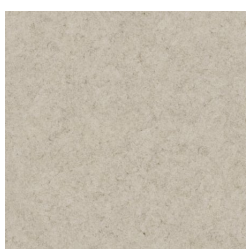
Ochre



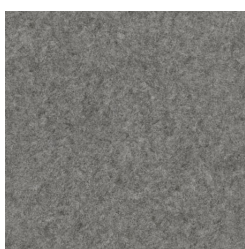
Olive



Parchment



Pebble



Pewter



Saffron



Sky



Smoke

+1 855 922 7377

hello@zintraacoustic.com

zintraacoustic.com

6 of 7

zintra®

# ETCH TILES LOUVER

Tiles

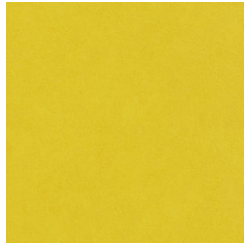
---



Slate



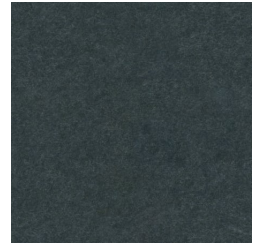
Storm



Sunshine



Tar



Twilight

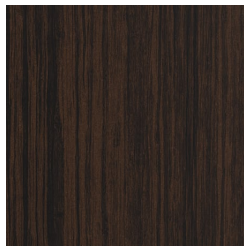
## Zintra Timber Print



Eucalyptus



Ironbark



Merbau



Spotted Gum