

PATTERN PANEL ASTRA

Acoustic Panels



Brand: **Zintra**

Collection: **Pattern Panel**

+1 855 922 7377

hello@zintraacoustic.com

zintraacoustic.com

1 of 7

zintra[®]

PATTERN PANEL ASTRA

Acoustic Panels



Pattern Panel Astra
Detail

PATTERN PANEL ASTRA

Acoustic Panels

Discover the 51 classic and contemporary designs available in Zintra Pattern Panels. Effortlessly elevate your space with style, texture, and superior sound absorption with Pattern Panel Astra.

✓ **Acoustic**

✓ **Bleach Cleanable**

✓ **Easy Clean**

✓ **Easy Install**

Description

Zintra Patterns offers a broad range of classic or contemporary panel designs that can be used on their own, or in conjunction with Zintra backing, to create beautiful, acoustic screens and wall coverings.

With virtually unlimited design options, each pattern can be intricately cut out of Zintra and paired with a matching or contrasting solid Zintra backing panel to achieve a unique aesthetic for walls or ceilings. Experience enhanced noise absorption and easy installation, while enjoying a broad range of neutral and vibrant Colours to suit any space.

Astra, features a perforated diamond pattern

Choose from 51 designs.

Abhaya | Asiatic | Astra | Bengal | Bharata | Bhushan | Circuit | Cirque | Deepak | Devraj | Elephanta | Fishbone | Foliage | Gadiva | Garden Art | Ginkgo | Haimati | Hex | Indus | Jacks | Kali | Kerala | Krishnan | Links | Lost | Malini | Mandava | Marquise | Monsoon | Nadu | Noktalar | Origami | Padmesh | Perdita | Pivot | Pixel | Prose | Punto | Raja | Sakra | Sankaran | Sanskrit | Setro | Shard | Siptical | Stone Age | Sutra | Telugu | Vanishing | Vedic | Wamika

Not suitable as a freestanding product.

Elevate your environment with style, texture, contrast, and depth

Dimensions

Pattern Only

1220mm (48") x 2745mm (108') x 12mm (1/2")

Pattern on Backer

1220mm (48") x 2745mm (108') x 24mm (1")

Composition

Zintra Acoustic Panel - 100% Solution Dyed (Colour Through) Polyester

12mm (1/2") - Density 2.4 kg /m² 0.5 lb/ft²

24mm (1") - Density 3.6 kg /m² 0.75 lb/ft²

PATTERN PANEL ASTRA

Acoustic Panels

Sustainability

Zintra is made from 100% recyclable materials.

- 60% post-consumer recycled content from PET bottles.
 - 35% pre-consumer recycled content from PET chips
 - 5% polylactic acid (PLA)
-

Fire Rating

ASTM-E84 – Class A classification
AS ISO 9705 – 2003 – Group 1 classification
EN-13501 – B-s2-d0 classification

Warranty

Visit FAQ for more details.

Supplied As

Ships Flat Pack

Go to the Technical Documents and download the Installation Guide for more details.

Suggested Installation

Go to Technical Documents and download the Installation Guide for more details.

How to Specify

1. Select Pattern design
2. Select Pattern only or Pattern on Backer.
3. Select Zintra Colour.

If selecting backer please state which colour is the pattern layer and which is the backer.

Care Instructions

Vacuum to remove dust.

Dab Zintra with a damp clean cloth and mild solution of liquid detergent and warm water. Repeat using only clean water, then pat dry with a lint free cloth.

For difficult stains, use a solution of household bleach (10% bleach / 90% water). To remove the bleach, repeat using a clean, water dampened cloth, then pat dry.

Always test in an inconspicuous area first and if you don't see the expected results, contact us.

Customisable

The Zintra Acoustic Solutions range is customisable to your project. Please get in touch with your local contact for details.

PATTERN PANEL ASTRA

Acoustic Panels

Additional Comments **Patterns Only NRC Rating**

- Directly Mounted: 0.45
- With 2" (50mm) Air Gap: 0.85
- With 6" (152mm) Air Gap: 0.90
- With 12" (305mm) Air Gap: 0.95

Patterns on Backer NRC Rating

- Directly Mounted: 0.75
 - With 2" (50mm) Air Gap: 0.95
 - With 6" (152mm) Air Gap: 1.0
 - With 12" (305mm) Air Gap: 1.0
-

PATTERN PANEL ASTRA

Acoustic Panels

Color & Finish Options

Zintra 12mm Solid PET



Bark



Brick



Cadet



Chambray



Cobalt



Ecu



Elderberry



Fossil



Frost



Grass



Greige



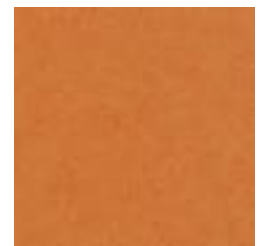
Ivory



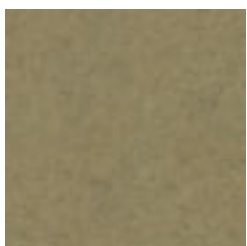
Linen



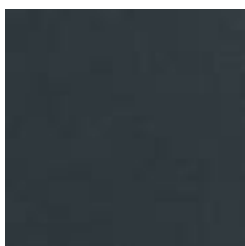
Malachite



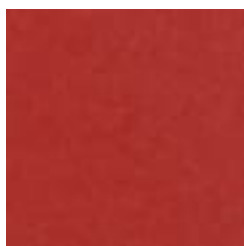
Mandarin



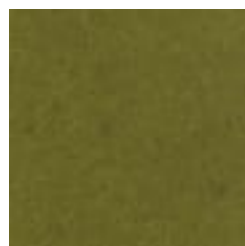
Meadow



Midnight



Ochre



Olive



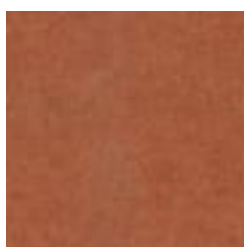
Parchment



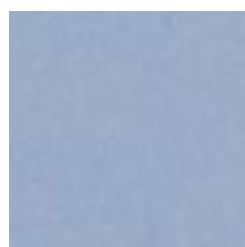
Pebble



Pewter



Saffron



Sky



Smoke

+1 855 922 7377

hello@zintraacoustic.com

zintraacoustic.com

6 of 7

zintra®

PATTERN PANEL ASTRA

Acoustic Panels



Slate



Storm



Sunshine



Tar



Twilight