

# BAFFLE SYSTEMS STACKED

Acoustic Baffles



Brand: **Zintra**

Collections: **Baffle Systems**

Applications: **Walls, Ceilings, Wall To Ceiling**

+1 855 922 7377

[hello@zintraacoustic.com](mailto:hello@zintraacoustic.com)

[zintraacoustic.com](https://zintraacoustic.com)

1 of 14

**zintra**<sup>®</sup>

# BAFFLE SYSTEMS STACKED

Acoustic Baffles



Baffle System Stacked Detail - Linen



Baffle System Stacked Detail - Linen



Baffle System Stacked Ceiling Detail



Baffle System Stacked Suspension Detail

+1 855 922 7377

hello@zintraacoustic.com

**zintraacoustic.com**

2 of 14

**zintra®**

# BAFFLE SYSTEMS STACKED

Acoustic Baffles



Baffle System Stacked Detail



Baffle System Stacked Lite Detail - Linen



Baffle System Stacked Lite Ceiling Detail



Baffle System Stacked Lite Suspension Detail



# BAFFLE SYSTEMS STACKED

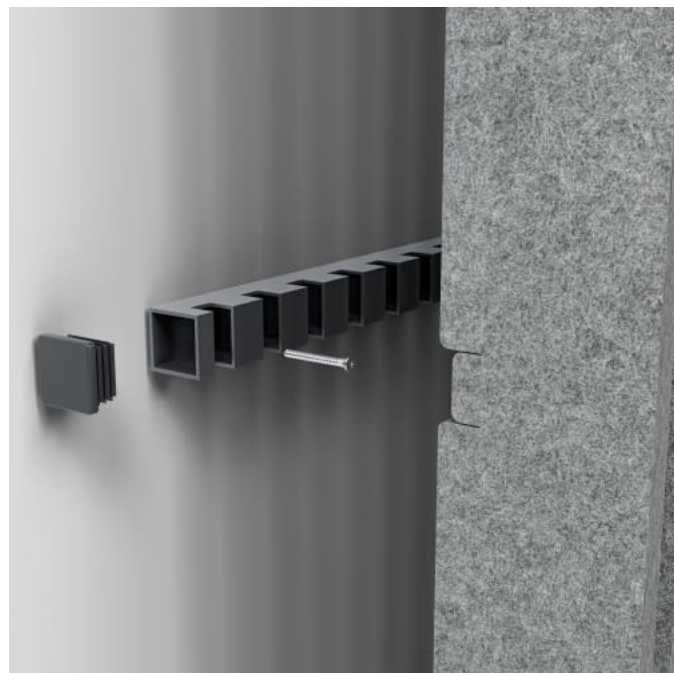
Acoustic Baffles



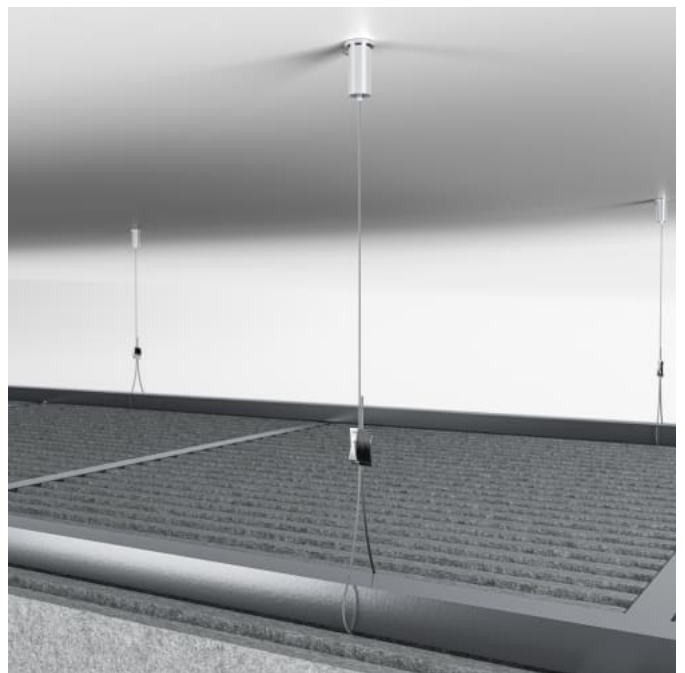
Baffle System Stacked Lite Detail



Baffle System Stacked Corner Detail



Baffle Systems Direct Mounting Detail



Baffle Systems Suspension Detail

# BAFFLE SYSTEMS STACKED

Acoustic Baffles

Stacked Baffle System comprises 32 prefabricated baffles in a stepped profile of varying heights. Each baffle press-fits into precision-notched cross supports. Perfect for suspension, wall mounting, or integrated transitions.

- ✓ Acoustic
- ✓ Bleach Cleanable
- ✓ Easy Clean
- ✓ Easy Install

Description	<p>Where architecture meets acoustic intent, Zintra Baffle Systems bring sculptural design to ceiling and wall applications. Flowing seamlessly from surface to structure, Zintra baffle designs transform noise control into a design feature—delivering bold, 3D forms that play with light, depth, and shadow.</p> <p>Zintra Baffles are a prefabricated system that offer an innovative replacement to traditional mineral fibre lay systems. Available in full and Lite variations, each design includes 32 or 16 prefabricated baffles and ships with five 25mm notched aluminium tubes in a sleek black powder coat finish—also available in 12 vivid powder coat colors to complement any interior palette.</p> <p>Zintra Baffles aren't just sound absorbers—they're architectural statements. Suspend them from ceilings, mount to walls, or create ceiling-to-wall transitions for continuous visual impact.</p> <p><b>Stacked</b> reveals a sequence of elongated, tiered steps to create height variation across the baffle system. This layered profile adds architectural rhythm and depth, offering a bold yet balanced aesthetic acoustic statement.</p> <p>With superior NRC performance, Zintra's vertical baffles present increased surface area to the room enhancing sound absorption. Combined with ready-to-install ease and a wide selection of designs, finishes and print options. Zintra Baffle systems deliver flexible acoustic solutions ideal for large noisy spaces like education settings, commercial offices, hospitality venues, or public zones where atmosphere and performance must work in harmony.</p> <p>Available in 6 designs.</p> <p>Cove   Knotty   Live Edge   Stacked   Straight   Yin-Yang</p> <p>All designs also available in a Lite version.</p>
-------------	---

How to Specify	<div>1. Select Design</div> <div>2. Select Zintra Colour</div>
----------------	--

Composition	<div>Zintra Acoustic Panel - 95% Polyester + 5% PLA</div> <div>12mm (1/2") -Density 2.4 kg /m² 0.5 lb/ft143</div>
-------------	---

# BAFFLE SYSTEMS STACKED

Acoustic Baffles

Sustainability	<p>Zintra is made from 100% recyclable materials.</p> <ul style="list-style-type: none"><li>• 60% post-consumer recycled content from PET bottles.</li><li>• 35% pre-consumer recycled content from PET chips</li><li>• 5% polylactic acid (PLA)</li></ul>
Dimensions	953mm (37.5") x 2743mm (108") x 100mm (4")
Fire Rating	<p>ASTM-E84 – Class A classification AS ISO 9705 – 2003 – Group 1 classification EN-13501 – B-s2-d0 classification</p>
Assembly & Delivery	<p>Ships Flat Packed.</p> <p>Go to the Technical Documents and download the Installation Guide for more details.</p>
Suggested Installation	Go to Technical Documents and download the Installation Guide for more details.
Care Instructions	<p>Vacuum to remove dust.</p> <p>Dab Zintra with a damp clean cloth and mild solution of liquid detergent and warm water. Repeat using only clean water, then pat dry with a lint free cloth.</p> <p>For difficult stains, use a solution of household bleach (10% bleach / 90% water). To remove the bleach, repeat using a clean, water dampened cloth, then pat dry.</p> <p>Always test in an inconspicuous area first and if you don't see the expected results, contact us.</p>
Warranty	5-year warranty. Visit <a href="https://baresque.com.au/warranty">baresque.com.au/warranty</a> for complete details.
Customisable	The Zintra Acoustic Solutions range is customisable to your project. Please get in touch with your local contact for details.

# BAFFLE SYSTEMS STACKED

Acoustic Baffles

## Color & Finish Options

Zintra 12mm Solid PET





# BAFFLE SYSTEMS STACKED

Acoustic Baffles



Slate



Storm



Sunshine



Tar



Twilight

## Zintra Timber



Eucalyptus



Ironbark



Merbau



Spotted Gum

## Zintra Premium Wood



Knotty Pine



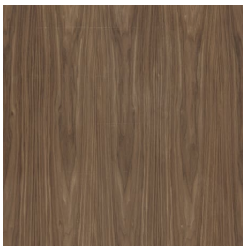
Maple



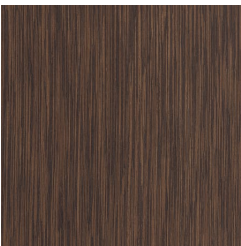
Poplar



Australian Walnut



Claro Walnut



Palm Wood



Rustic Walnut



Cherry



Euro Beech



Lacewood



Redwood



White Oak

## Zintra Premium Material



# BAFFLE SYSTEMS STACKED

Acoustic Baffles



Terrazzo Light



Terrazzo Medium



Terrazzo Dark



Travertine Light



Travertine Medium



Travertine Dark



Shale Light



Shale Medium



Shale Dark



Raku Bone



Raku Luster



Raku Jade



Concrete Cast



Concrete Polished



Concrete Dark Tint



Terracotta Sun  
Bleached



Terracotta Mission



Terracotta Antique

## Zintra Studio Colours Pebble



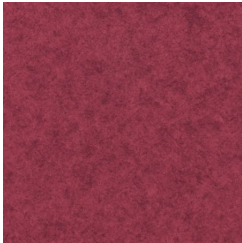
Plnot



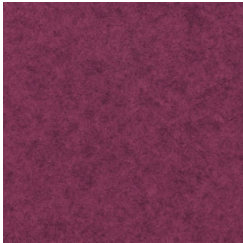
Currant



Rubine



Ceruse



Rhubarb

# BAFFLE SYSTEMS STACKED

Acoustic Baffles



Rosewood



Mulberry



Mauvelous



Crepe



Papaya



Terracotta



Creamsicle



Buff



Chai



Harvest Moon



Melon



Sunset



Pueblo



Blonde



Mellow



Citron



Avocado



Envy



Spruce



Safari



Sage



Wasabi



Matcha



Pistachio



Artichoke



# BAFFLE SYSTEMS STACKED

Acoustic Baffles



Carmine



Mojito



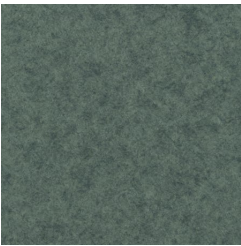
Seaweed



Mist



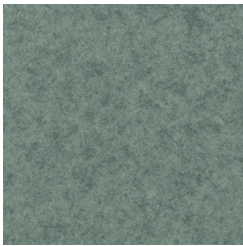
Peacock



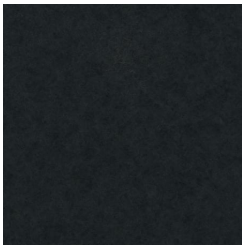
Aegean



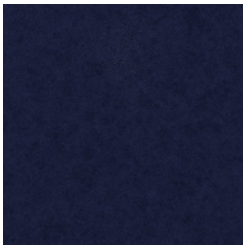
Pigeon



Azure



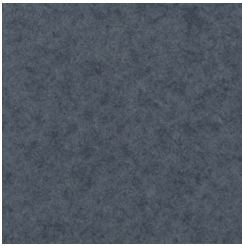
Sapphire



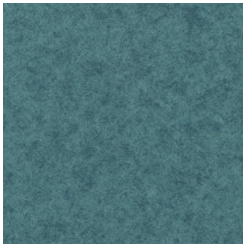
Indigo



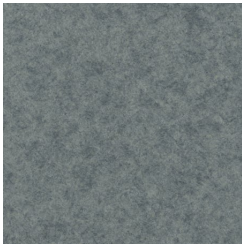
Maya



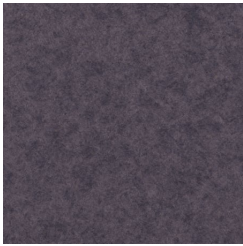
Regatta



Surf



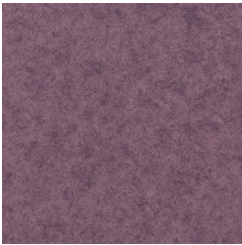
Powder



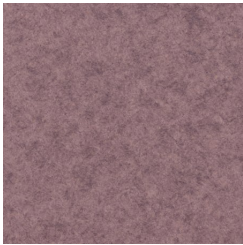
Independence



Plum



Wisteria



Thistle



Oat



Shell



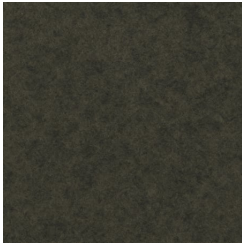
Cinnamon



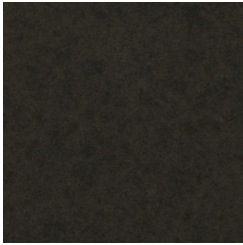
Mocha



Sepia



Oyster



Sterling



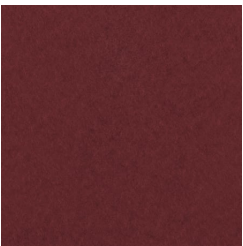
# BAFFLE SYSTEMS STACKED

Acoustic Baffles

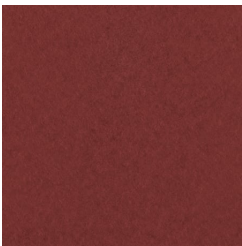


Stone

## Zintra Studio Colours Frost



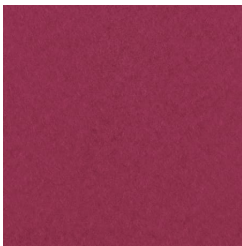
Pinot



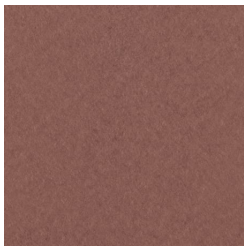
Currant



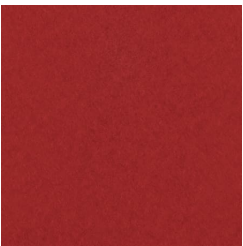
Ceruse



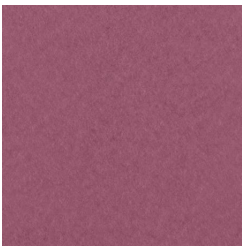
Rhubarb



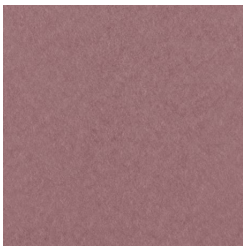
Rosewood



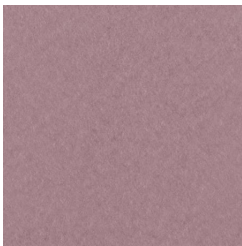
Rubine



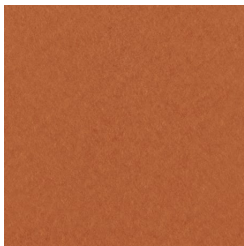
Mulberry



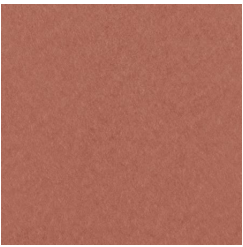
Mauvelous



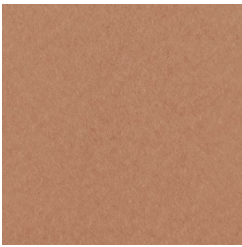
Crepe



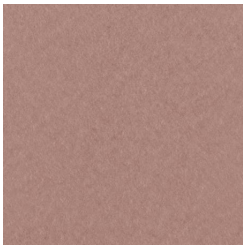
Papaya



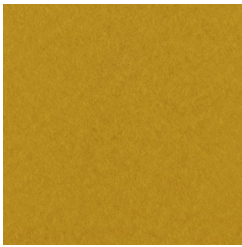
Terracotta



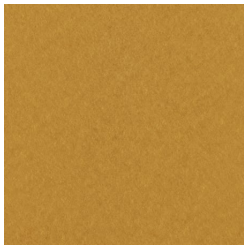
Creamsicle



Buff



Chai



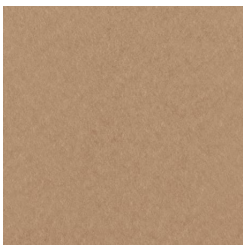
Harvest Moon



Melon



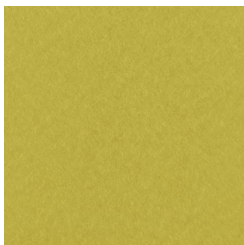
Sunset



Pueblo



Blonde



Mellow

# BAFFLE SYSTEMS STACKED

Acoustic Baffles



Citron



Avocado



Envy



Spruce



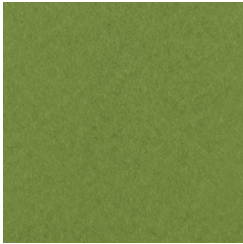
Safari



Sage



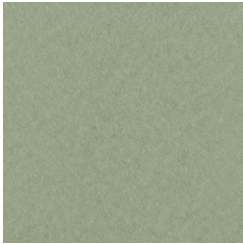
Wasabi



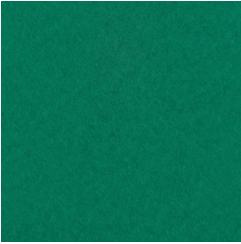
Matcha



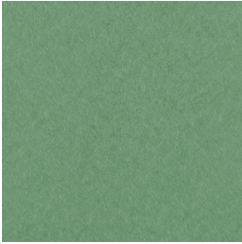
Pistachio



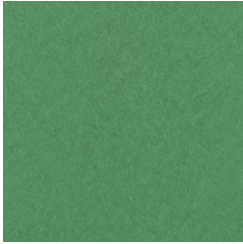
Artichoke



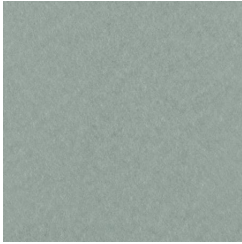
Carmine



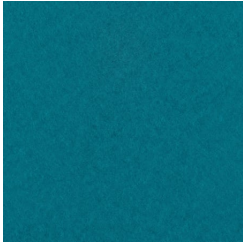
Mojito



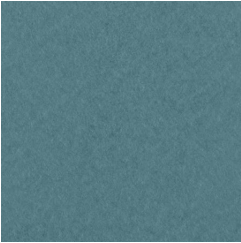
Seaweed



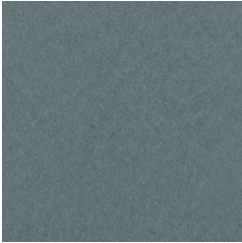
Mist



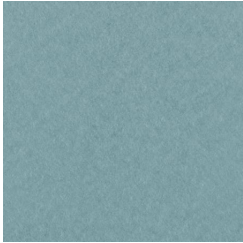
Peacock



Aegean



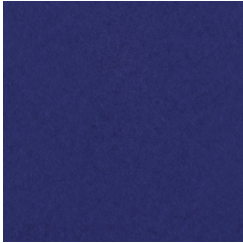
Pigeon



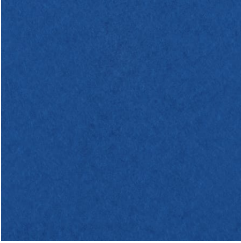
Azure



Sapphire



Indigo



Maya



Regatta



Surf



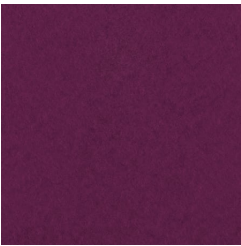
Powder



Independence

# BAFFLE SYSTEMS STACKED

Acoustic Baffles



Plum



Wisteria



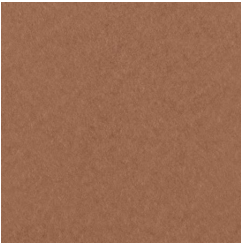
Thistle



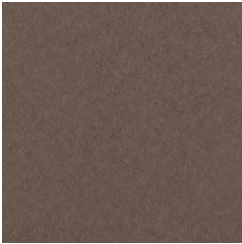
Oat



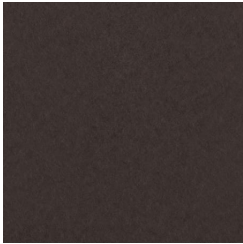
Shell



Cinnamon



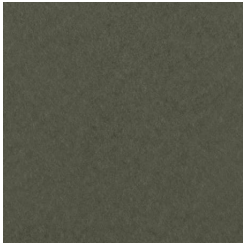
Mocha



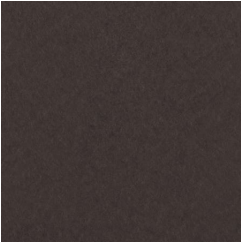
Sepia



Oyster



Sterling



Stone