

# BAFFLE SYSTEMS STRAIGHT

Acoustic Baffles



Brand: **Zintra**

Collections: **Baffle Systems**

Applications: **Walls, Ceilings, Wall To Ceiling**

+1 855 922 7377

hello@zintraacoustic.com

zintraacoustic.com

1 of 14

**zintra**<sup>®</sup>

# BAFFLE SYSTEMS STRAIGHT

Acoustic Baffles



Baffle Systems Straight Detail - Chambray



Baffle Systems Straight Ceiling Detail



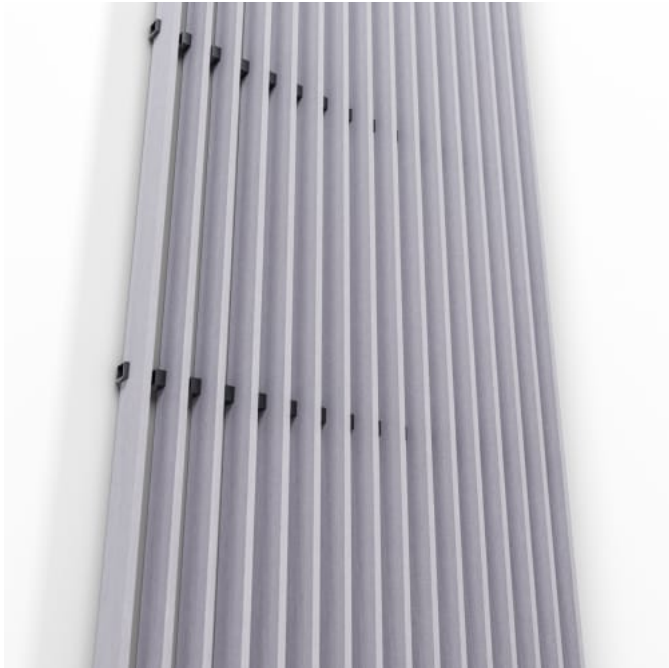
Baffle Systems Straight Suspension Detail



Baffle Systems Straight Detail

# BAFFLE SYSTEMS STRAIGHT

Acoustic Baffles



Baffle Systems Straight Lite Detail - Chambray



Baffle Systems Straight Lite Ceiling Detail



Baffle Systems Straight Lite Suspension Detail



Baffle Systems Straight Lite Detail



# BAFFLE SYSTEMS STRAIGHT

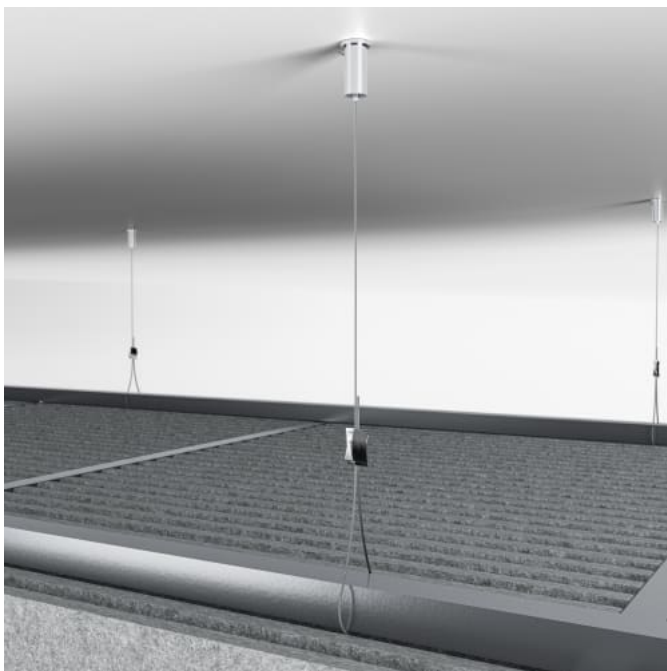
Acoustic Baffles



Baffle Systems Straight Lite Corner Detail



Baffle Systems Direct Mounting Detail



Baffle Systems Suspension Detail

# BAFFLE SYSTEMS STRAIGHT

Acoustic Baffles

Straight Baffle System offers 32 clean, prefabricated baffles with uninterrupted lines. Baffles press-fit into cross support notches. Install across ceilings, walls, or both.

- ✓ Acoustic
- ✓ Bleach Cleanable
- ✓ Easy Clean
- ✓ Easy Install

## Description

Where architecture meets acoustic intent, Zintra Baffle Systems bring sculptural design to ceiling and wall applications. Flowing seamlessly from surface to structure, Zintra baffle designs transform noise control into a design feature—delivering bold, 3D forms that play with light, depth, and shadow.

Zintra Baffles are a prefabricated system that offer an innovative replacement to traditional mineral fibre lay systems. Available in full and Lite variations, each design includes 32 or 16 prefabricated baffles and ships with five 25mm notched aluminium tubes in a sleek black powder coat finish—also available in 12 vivid powder coat colors to complement any interior palette.

Zintra Baffles aren't just sound absorbers—they're architectural statements. Suspend them from ceilings, mount to walls, or create ceiling-to-wall transitions for continuous visual impact.

**Straight** is the essence of minimalism. With uninterrupted baffle lengths and no decorative cut-outs, this design delivers a clean, refined aesthetic—ideal for spaces seeking structure, rhythm, and clarity.

With superior NRC performance, Zintra's vertical baffles present increased surface area to the room enhancing sound absorption. Combined with ready-to-install ease and a wide selection of designs, finishes and print options. Zintra Baffle systems deliver flexible acoustic solutions ideal for large noisy spaces like education settings, commercial offices, hospitality venues, or public zones where atmosphere and performance must work in harmony.

Available in 6 designs.

Cove | Knotty | Live Edge | Stacked | Straight | Yin-Yang

All designs also available in a Lite version.

## How to Specify

1. Select Design
2. Select Zintra Colour

## Composition

Zintra Acoustic Panel - 95% Polyester + 5% PLA

12mm (1/2") -Density 2.4 kg /m² 0.5 lb/ft²

# BAFFLE SYSTEMS STRAIGHT

Acoustic Baffles

Sustainability	<p>Zintra is made from 100% recyclable materials.</p> <ul style="list-style-type: none"><li>• 60% post-consumer recycled content from PET bottles.</li><li>• 35% pre-consumer recycled content from PET chips</li><li>• 5% polylactic acid (PLA)</li></ul>
Dimensions	953mm (37.5") x 2743mm (108") x 75mm (3")
Fire Rating	<p>ASTM-E84 – Class A classification AS ISO 9705 – 2003 – Group 1 classification EN-13501 – B-s2-d0 classification</p>
Assembly & Delivery	<p>Ships Flat Packed.</p> <p>Go to the Technical Documents and download the Installation Guide for more details.</p>
Suggested Installation	Go to Technical Documents and download the Installation Guide for more details.
Care Instructions	<p>Vacuum to remove dust.</p> <p>Dab Zintra with a damp clean cloth and mild solution of liquid detergent and warm water. Repeat using only clean water, then pat dry with a lint free cloth.</p> <p>For difficult stains, use a solution of household bleach (10% bleach / 90% water). To remove the bleach, repeat using a clean, water dampened cloth, then pat dry.</p> <p>Always test in an inconspicuous area first and if you don't see the expected results, contact us.</p>
Warranty	5-year warranty. Visit <a href="https://baresque.com.au/warranty">baresque.com.au/warranty</a> for complete details.
Customisable	The Zintra Acoustic Solutions range is customisable to your project. Please get in touch with your local contact for details.

# BAFFLE SYSTEMS STRAIGHT

Acoustic Baffles

## Color & Finish Options

Zintra 12mm Solid PET



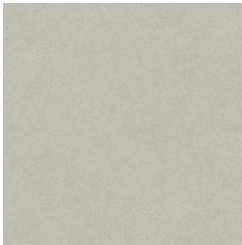
Bark



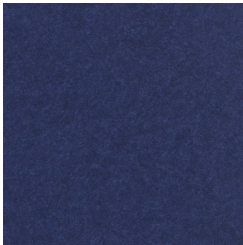
Brick



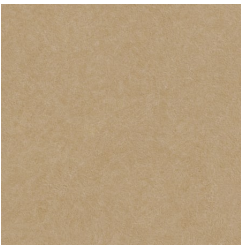
Cadet



Chambray



Cobalt



Ecru



Elderberry



Fossil



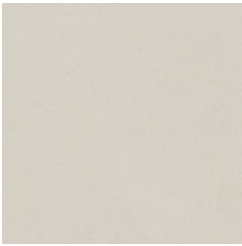
Frost



Grass



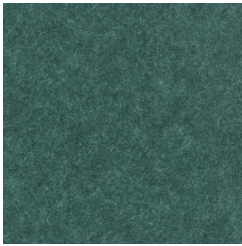
Greige



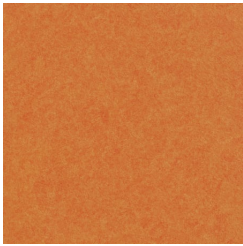
Ivory



Linen



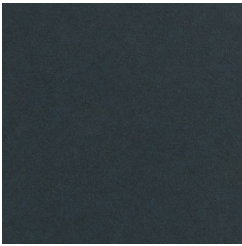
Malachite



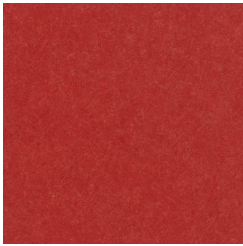
Mandarin



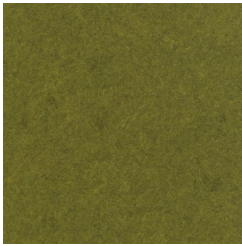
Meadow



Midnight



Ochre



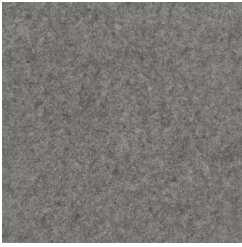
Olive



Parchment



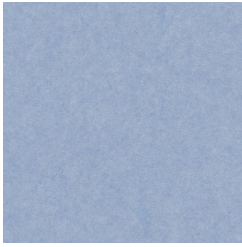
Pebble



Pewter



Saffron



Sky



Smoke



# BAFFLE SYSTEMS STRAIGHT

Acoustic Baffles



Slate



Storm



Sunshine



Tar



Twilight

## Zintra Timber



Eucalyptus



Ironbark



Merbau



Spotted Gum

## Zintra Premium Wood



Knotty Pine



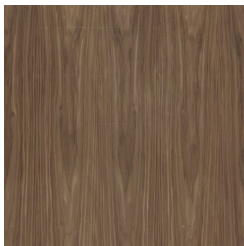
Maple



Poplar



Australian Walnut



Claro Walnut



Palm Wood



Rustic Walnut



Cherry



Euro Beech



Lacewood



Redwood



White Oak

## Zintra Premium Material



# BAFFLE SYSTEMS STRAIGHT

Acoustic Baffles



Terrazzo Light



Terrazzo Medium



Terrazzo Dark



Travertine Light



Travertine Medium



Travertine Dark



Shale Light



Shale Medium



Shale Dark



Raku Bone



Raku Luster



Raku Jade



Concrete Cast



Concrete Polished



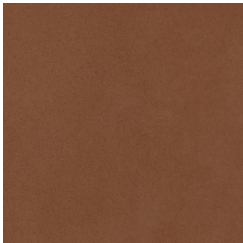
Concrete Dark Tint



Terracotta Sun  
Bleached



Terracotta Mission



Terracotta Antique

## Zintra Studio Colours Pebble



Plnot



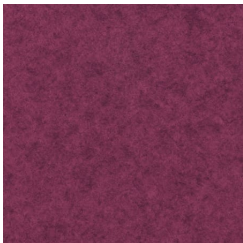
Currant



Rubine



Ceruse



Rhubarb

# BAFFLE SYSTEMS STRAIGHT

Acoustic Baffles



Rosewood



Mulberry



Mauvelous



Crepe



Papaya



Terracotta



Creamsicle



Buff



Chai



Harvest Moon



Melon



Sunset



Pueblo



Blonde



Mellow



Citron



Avocado



Envy



Spruce



Safari



Sage



Wasabi



Matcha



Pistachio



Artichoke



# BAFFLE SYSTEMS STRAIGHT

Acoustic Baffles



Carmine



Mojito



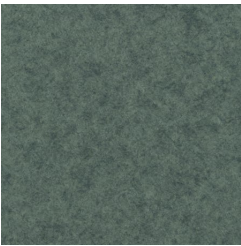
Seaweed



Mist



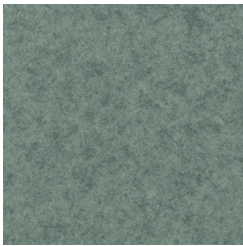
Peacock



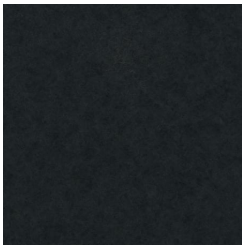
Aegean



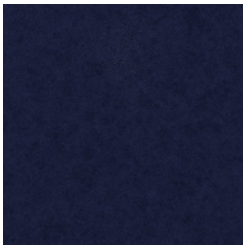
Pigeon



Azure



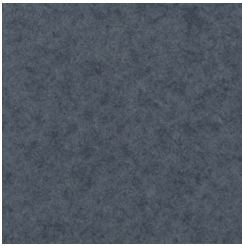
Sapphire



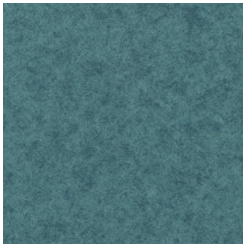
Indigo



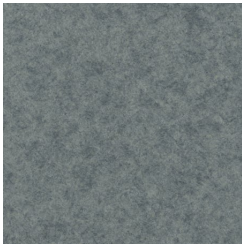
Maya



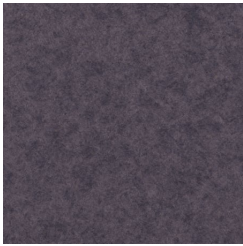
Regatta



Surf



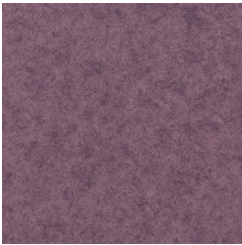
Powder



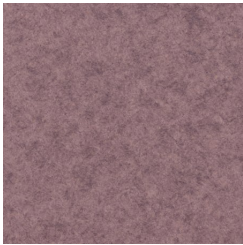
Independence



Plum



Wisteria



Thistle



Oat



Shell



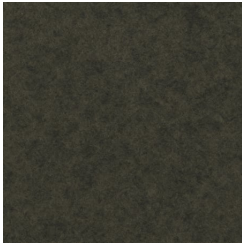
Cinnamon



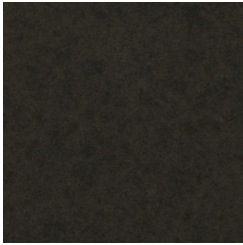
Mocha



Sepia



Oyster



Sterling



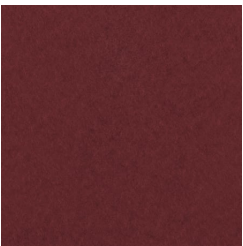
# BAFFLE SYSTEMS STRAIGHT

Acoustic Baffles

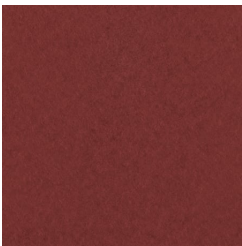


Stone

## Zintra Studio Colours Frost



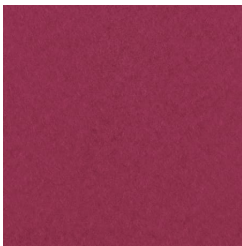
Pinot



Currant



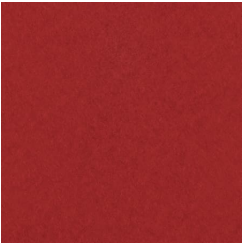
Ceruse



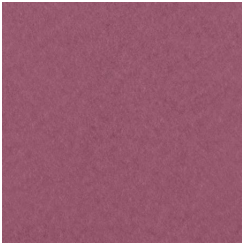
Rhubarb



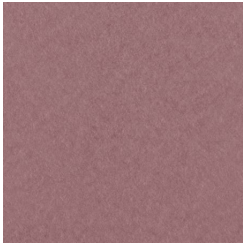
Rosewood



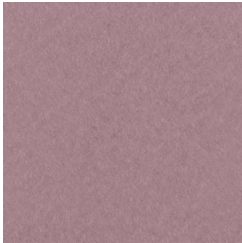
Rubine



Mulberry



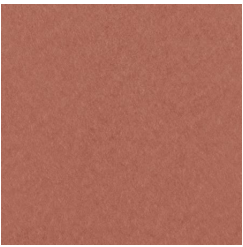
Mauvelous



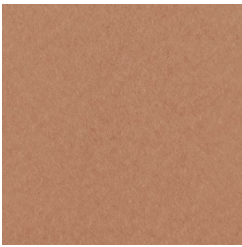
Crepe



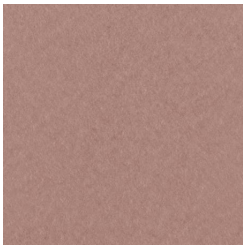
Papaya



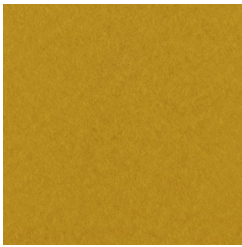
Terracotta



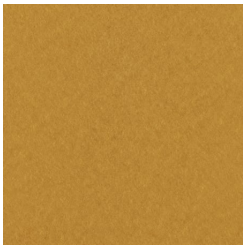
Creamsicle



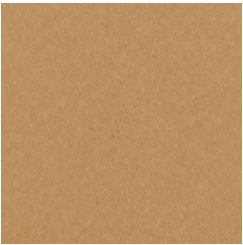
Buff



Chai



Harvest Moon



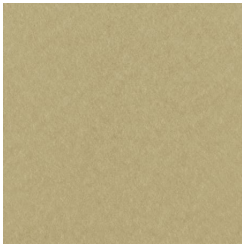
Melon



Sunset



Pueblo



Blonde



Mellow

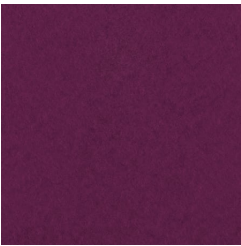
# BAFFLE SYSTEMS STRAIGHT

Acoustic Baffles

				
Citron	Avocado	Envy	Spruce	Safari
				
Sage	Wasabi	Matcha	Pistachio	Artichoke
				
Carmine	Mojito	Seaweed	Mist	Peacock
				
Aegean	Pigeon	Azure	Sapphire	Indigo
				
Maya	Regatta	Surf	Powder	Independence

# BAFFLE SYSTEMS STRAIGHT

Acoustic Baffles



Plum



Wisteria



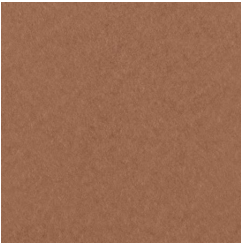
Thistle



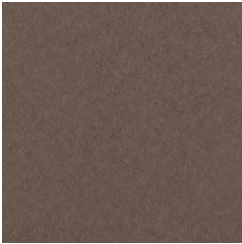
Oat



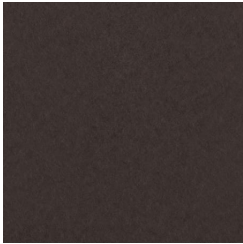
Shell



Cinnamon



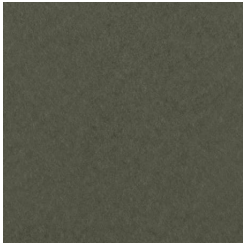
Mocha



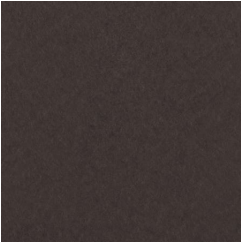
Sepia



Oyster



Sterling



Stone