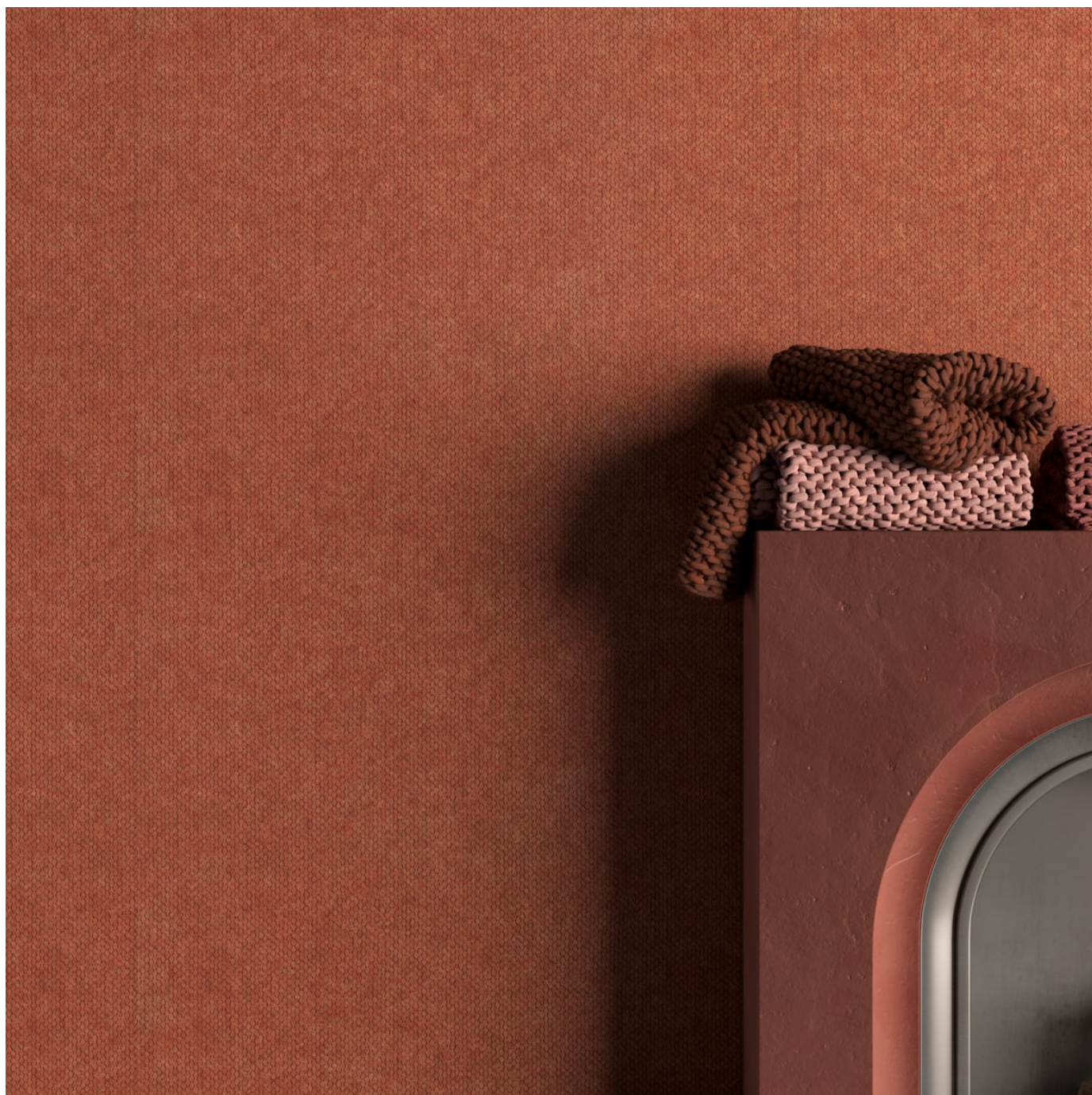


TEXTILE

Print



Brand: **Zintra**

Collections: **Premium Prints**

Applications: **Walls, Ceilings**

+1 855 922 7377

hello@zintraacoustic.com

zintraacoustic.com

1 of 8

zintra[®]

TEXTILE

Print



Textile Burlap - Linen



Textile Herringbone - Cadet



Textile Loom - Ivory

TEXTILE

Print

A tactile collection of four designs—Braid, Burlap, Herring, and Loom—bringing woven texture to acoustic surfaces. Available in 19 colourways to suit a range of interior styles.

- ✓ Acoustic
- ✓ Bleach Cleanable
- ✓ Easy Clean
- ✓ Easy Install

Description	<p>The Look of Fabric. The Sound of Zintra.</p> <p>Zintra Textile collection redefines PET acoustics with the rich texture of woven materials and bold, market-fresh colorways. Designed to rival traditional fabric solutions, this innovative collection introduces 19 striking Pantone-matched colourways, from quiet neutrals to vibrant juxtaposed tones. The palette has been curated to complement contemporary spaces while 4 distinct designs offer new opportunities for creative expression.</p> <p>A refined transparent print effect mimics the intricacy of real textile weaves, allowing the PET base to subtly shine through. The result is a fabric-like aesthetic with all the acoustic performance Zintra is known for—lightweight, low-VOC, and endlessly versatile.</p> <p>This collection features four distinctive designs: Braid, Burlap, Herring and Loom. Each brings a unique tactile quality and visual rhythm, offering designers versatile options for creating thoughtful, textured spaces.</p> <p>Braid is inspired by the artistry of braided textiles, featuring soft-edged diamond motifs and delicate knot-like details. This intricate pattern adds subtle movement and handcrafted refinement to the surface.</p> <p>Burlap offers a refined take on textured linen, with a soft, organic aesthetic and a subtle woven character. Natural irregularities and tactile depth evoke the warmth of handcrafted fabric.</p> <p>Herring reimagines the classic herringbone with rhythmic chevron detailing and a richly textured surface. Its structured geometry brings timeless elegance and architectural definition.</p> <p>Loom reflects a more contemporary sensibility, drawing on the linear rhythm and spacing found in traditional weaving. Its minimalist texture creates a sense of movement and balance.</p> <p>Zintra Textile designs bring flexibility, offered in both portrait and landscape orientations. Perfect for workplace, education, retail, or hospitality settings—where sound control meets design intent.</p> <p>Textile-inspired. Performance-driven.</p>
-------------	---

How to Specify	<div>1. Select Design</div> <div>2. Select Zintra Colour</div> <div>**Print colour is prematched to the base substrate.</div>
----------------	---

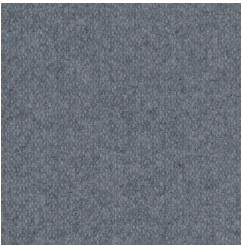
TEXTILE

Print

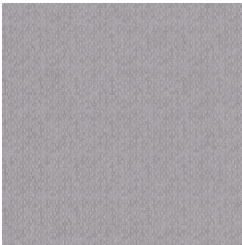
Composition	Zintra Acoustic Panel - 95% Polyester + 5% PLA 12mm (1/2") -Density 2.4 kg /m² 0.5 lb/ft133
Dimensions	2800mm (110")x 1225mm (48") x 12mm (1/2")
Fire Rating	ASTM-E84 – Class A classification AS ISO 9705 – 2003 – Group 1 classification EN-13501 – B-s2-d0 classification
Supplied As	Flat Panel in selected design and colour
Assembly & Delivery	Ships Flat Packed. Go to the Technical Documents and download the Installation Guide for more details.
Suggested Installation	Go to Technical Documents and download the Installation Guide for more details.
Care Instructions	Vacuum to remove dust. Dab Zintra with a damp clean cloth and mild solution of liquid detergent and warm water. Repeat using only clean water, then pat dry with a lint free cloth. For difficult stains, use a solution of household bleach (10% bleach / 90% water). To remove the bleach, repeat using a clean, water dampened cloth, then pat dry. Always test in an inconspicuous area first and if you don't see the expected results, contact us.
Warranty	5-year warranty. Visit baresque.com.au/warranty for complete details.
Customisable	The Zintra Acoustic Solutions range is customisable to your project. Please get in touch with your local contact for details.
Additional Comments	Directly Mounted 0.45 With 2" (50mm) air gap 0.85 With 6" (152mm) air gap 0.90

Color & Finish Options

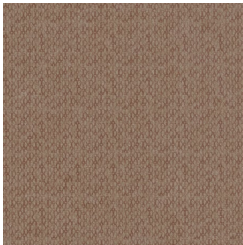
Zintra Textile Braid



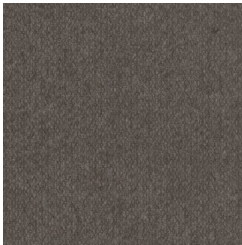
Cadet



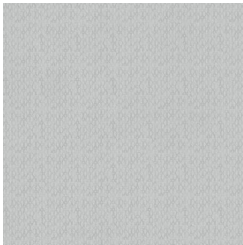
Chambray



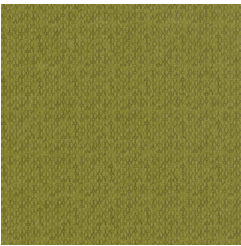
Ecru



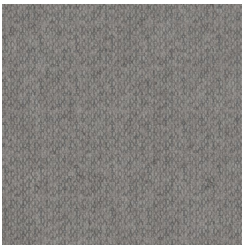
Fossil



Frost



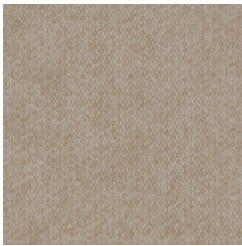
Grass



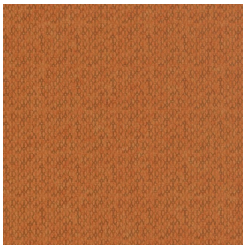
Greige



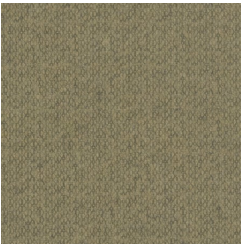
Ivory



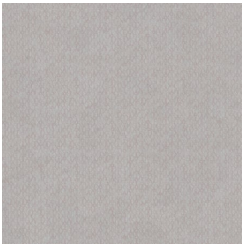
Linen



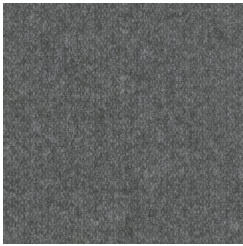
Mandarin



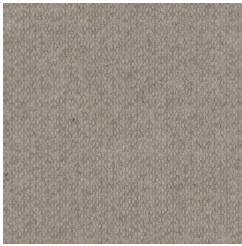
Meadow



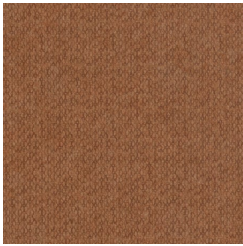
Parchment



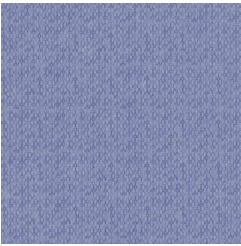
Pewter



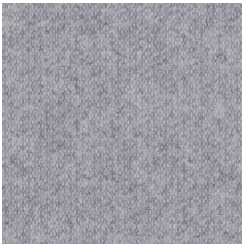
Pebble



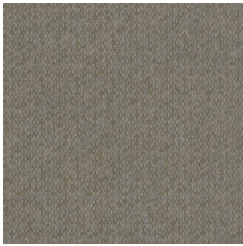
Saffron



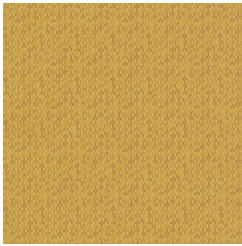
Sky



Smoke



Storm

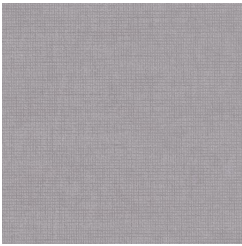


Sunshine

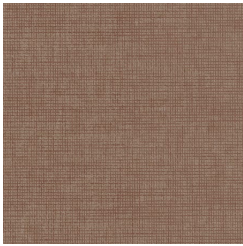
Zintra Textile Burlap



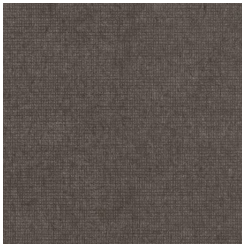
Cadet



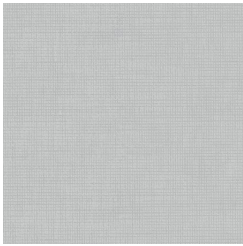
Chambray



Ecru



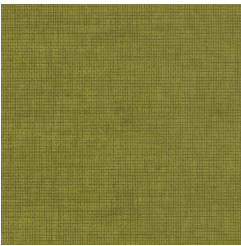
Fossil



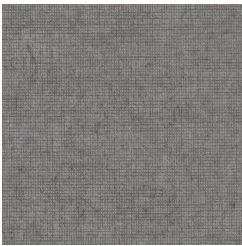
Frost

TEXTILE

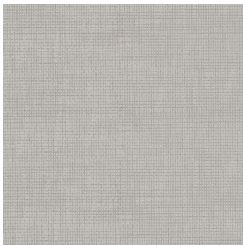
Print



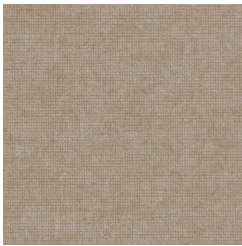
Grass



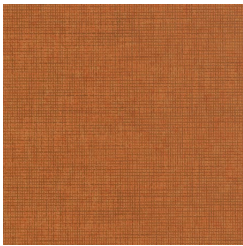
Greige



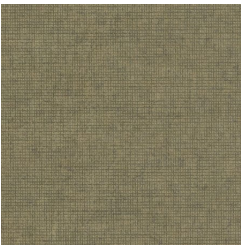
Ivory



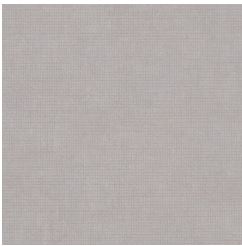
Linen



Mandarin



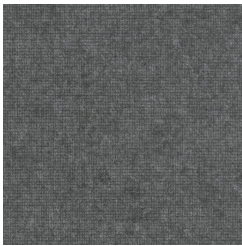
Meadow



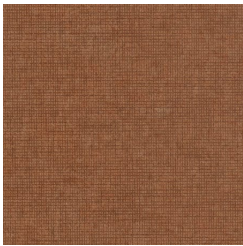
Parchment



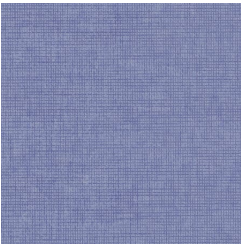
Pebble



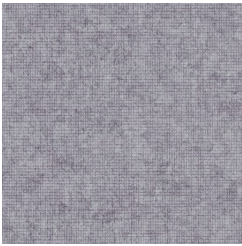
Pewter



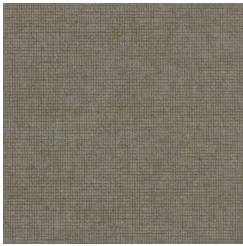
Saffron



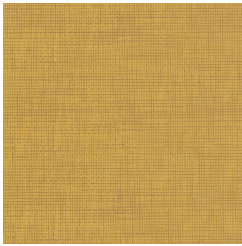
Sky



Smoke

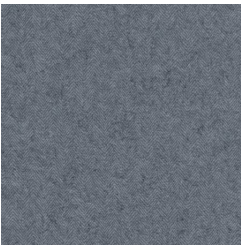


Storm

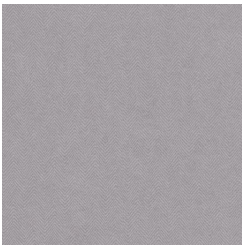


Sunshine

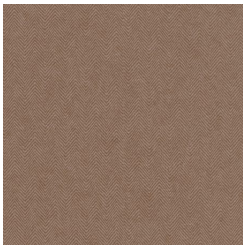
Zintra Textile Herring



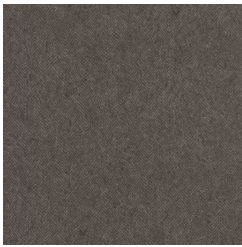
Cadet



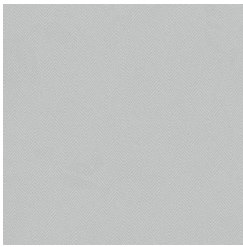
Chambray



Ecru



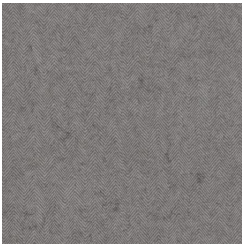
Fossil



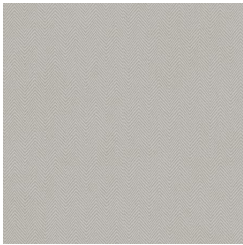
Frost



Grass



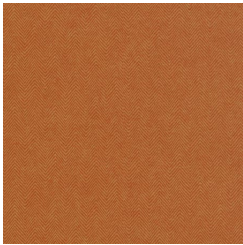
Greige



Ivory



Linen



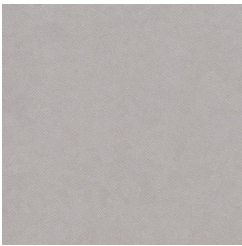
Mandarin

TEXTILE

Print



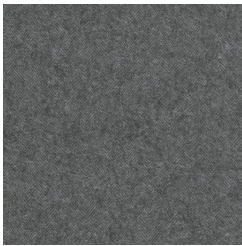
Meadow



Parchment



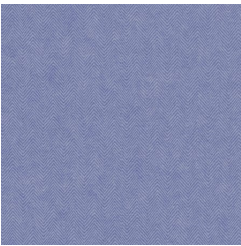
Pebble



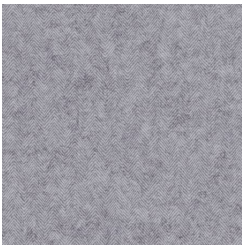
Pewter



Saffron



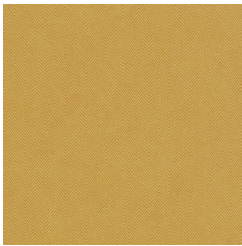
Sky



Smoke



Storm

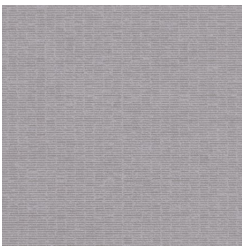


Sunshine

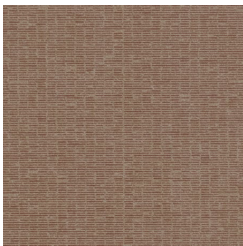
Zintra Textile Loom



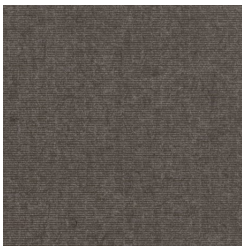
Cadet



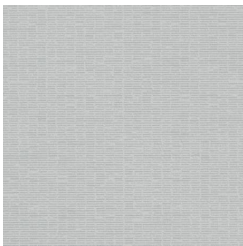
Chambray



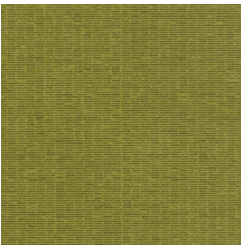
Ecru



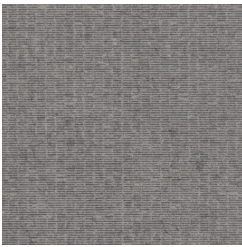
Fossil



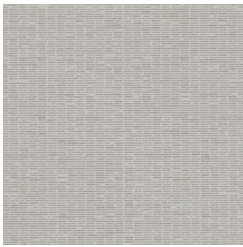
Frost



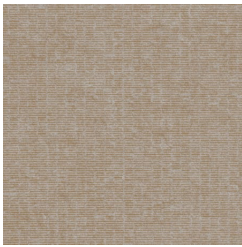
Grass



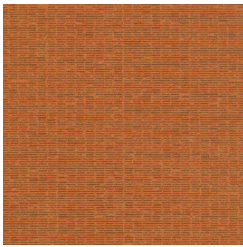
Greige



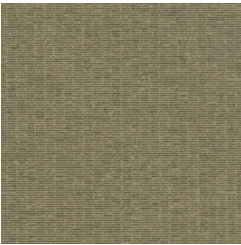
Ivory



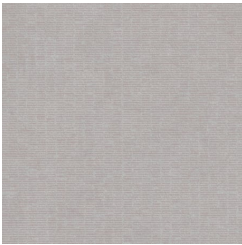
Linen



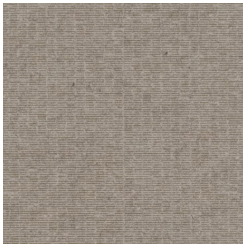
Mandarin



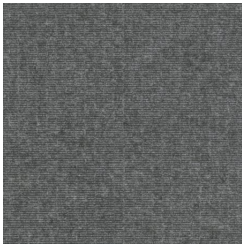
Meadow



Parchment



Pebble



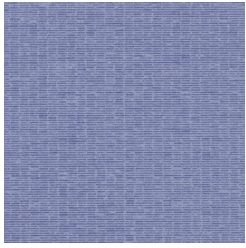
Pewter



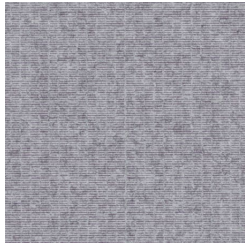
Saffron

TEXTILE

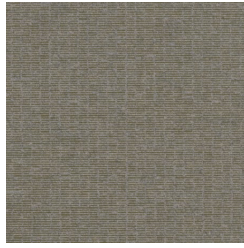
Print



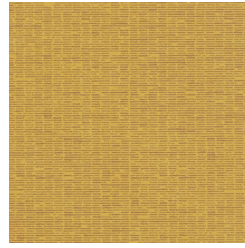
Sky



Smoke



Storm



Sunshine